



# probandas®

Guía de Productos / *Products Guide*

[www.probandas.com](http://www.probandas.com)



## Nuestra Empresa / Our company:

PROBANDAS S de RL de CV es una compañía que tiene como principios el servir a nuestros clientes con el mejor servicio y productos de PRIMERA calidad, cada día nuestro esfuerzo por ser mejores y mantenernos como el líder ha sido una tarea difícil que nos ayuda día a día a conocer más las necesidades de la industria. Con más de 20 años de experiencia hemos decidido extender nuestros productos e innovaciones, porque en PROBANDAS queremos ser los MEJORES.

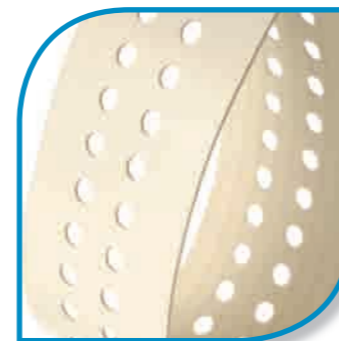
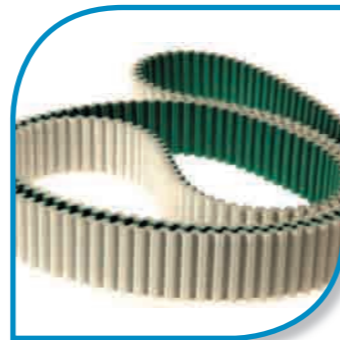
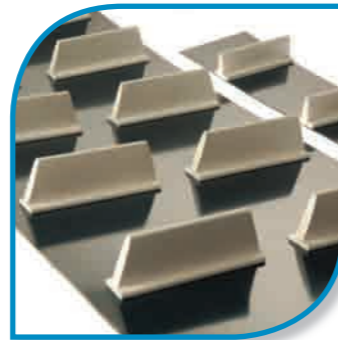
La clave de nuestra compañía es nuestra gente, somos un equipo integro que tenemos como meta la satisfacción de cada uno de nuestros clientes, dándoles a conocer nuestro compromiso que hay con cada uno de ellos por ser una empresa sólida, responsable y capaz de resolver sus problemas.

En PROBANDAS queremos mantener con nuestros clientes un negocio a LARGO PLAZO.

*PROBANDAS S. DE R.L. DE C.V. is a company that our main goal is to serve our customers with the best service and highest quality products, every day our efforts for being the leaders and maintain it has been a difficult job that has help us every day to know more the needs of the industry. With more than 20 years of experience in the market, this has help us to expand our products and innovations, because in PROBANDAS we want to be the BEST.*

*Our key to success is our people, we are a very close team that our success is to have each of our customers happy letting them know our compromise with them being a solid, responsible and able to solve problems company.*

*In our company we want to have a long term bussines relation with our customers.*



## Índice

|                          |    |
|--------------------------|----|
| Especiales.....          | 4  |
| Megapower.....           | 18 |
| Megalinear.....          | 21 |
| Megaflex.....            | 24 |
| Poleas.....              | 27 |
| Neopreno.....            | 28 |
| Megarib.....             | 35 |
| Servicios.....           | 40 |
| Bandas Industriales..... | 43 |

# Bandas Especiales Fabricación Especial / (Specialty Manufacturing)

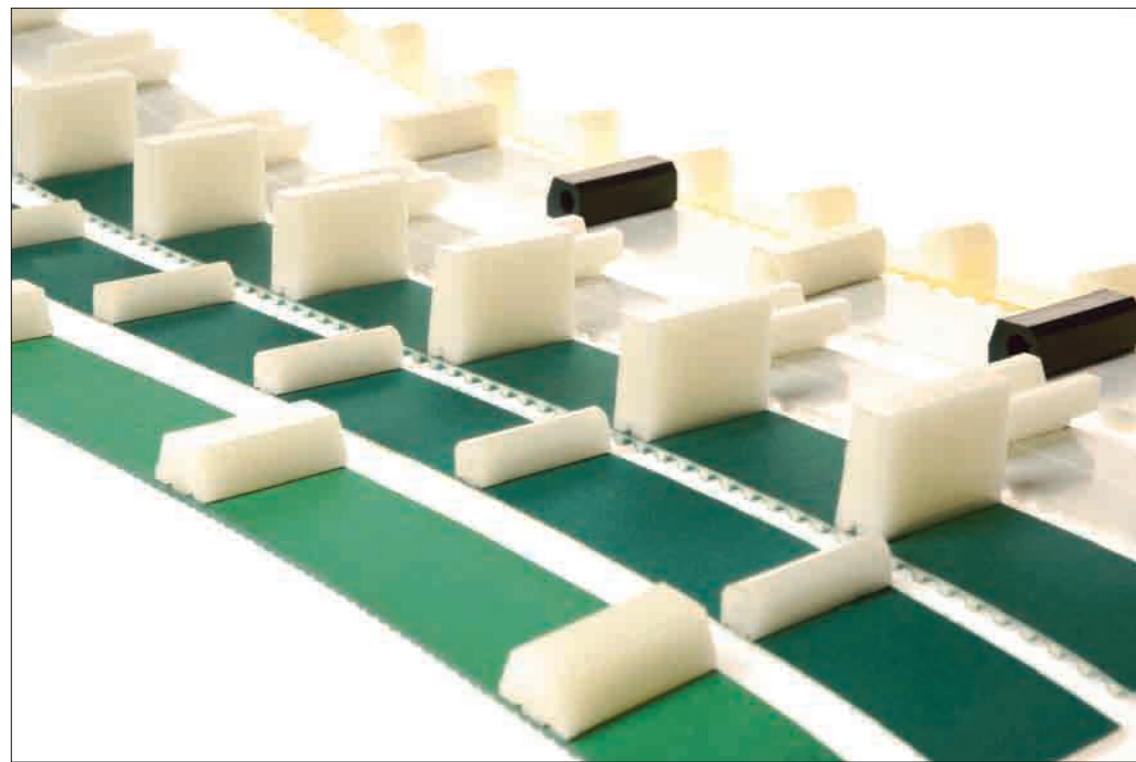
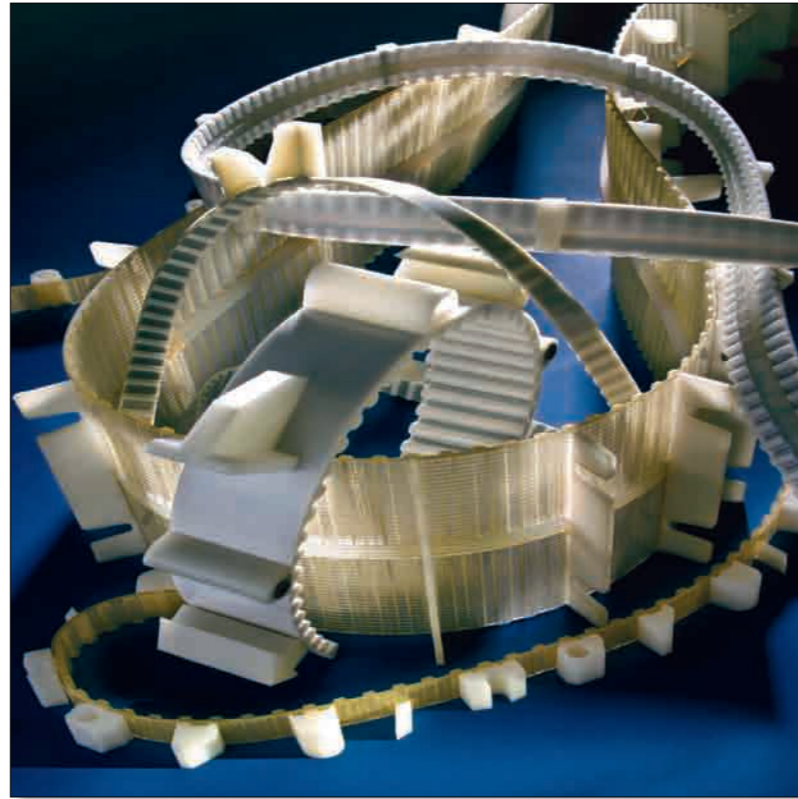
## a) Bandas dentadas de poliuretano con empujadores (Cleated urethane timing belts)

Fabricamos bandas dentadas de poliuretano con empujadores de cualquier tipo o medida termo-fusionados sobre la parte lisa de la banda.

Nuestra capacidad de procesar poliuretano da capacidades infinitas a nuestros clientes de poder hacer cualquier figura o estilo de empujadores para posicionamiento en las bandas.

*We manufacture urethane timing belts with any shape-form urethane cleats with our thermo-weld method on the flat or timing side of the belt.*

*Our capability to process urethane can make infinity shapes or figures of cleats for synchronized movements on the belt.*



Fabricación de empujadores de poliuretano con insertos metálicos, empujadores con tornillos y bases metálicas para el replazo de empujadores.

*Manufacture of urethane cleats with metal inserts, bolted cleats with metal tooth side.*



Empujadores de poliuretano en banda con nylon en el back y dentado NFT-NFB.

*Urethane cleats welded into a timing belt with nylon on back and tooth side NFT-NFB.*



**b) Bandas dentadas de Poliuretano hechas a la medida**

*Splice welded urethane timing belts*

Fabricamos bandas dentadas de Poliuretano hechas a la medida en pasos milimétricos y en pulgadas.

Desarrollo de largo desde: 420mm (16.5") a 100 mts. (328')

Anchos estándares en milímetros: 200, 150, 115, 100, 85, 75, 55, 50, 32, 25, 16, 15, 10.

Anchos estándares en pulgadas: 6 , 5 , 4, 3, 2, 1.5, .75, .5, .375

Banda ancha paso T10 y H: 520mm o 21"

*Our splice wedling is FAST, we can make your timing belt to the dimensions desired on metric or inch pitches.*

*Lenghts we can splice: from 420mm (16.5") to 100 mts (328').*

*Standard widths on metric pitches: 200, 150, 115, 85, 75, 55, 32, 25, 16, 15, 10.*

*Standard widths on inch pitches: 6 , 5 , 4, 3, 2, 1.5, .75, .5, .375).*



**c) Bandas con recubrimiento**  
*Covered belts*



Bandas con recubrimiento de Linatex®.  
*Neoprene or urethane timing belts with Linatex® cover.*

Linatex® es de dureza 40 Sh A disponible en espesores de 3, 6, 12mm.

*Linatex® is a 40 Sh A durometer available on 3, 6, 12mm thickness.*



Bandas con recubrimiento de esponja de poliuretano  
*Timing belts with blue EVA foam cover.*

La Esponja azul tiene dureza de 20-30 Sh A, disponible de 16 , 11mm o menos de espesor.

*EVA foam is 20-30 Sh A durometer, available 16, 11mm or less in thickness.*

Bandas con recubrimiento de esponja negra de 17mm de espesor.  
*Timing belt with black soft sponge cover, thickness of 17mm.*



Banda con recubrimiento afelpado tipo Novo, en espesor de 2-4mm.  
*Timing belt with grey felt cover Novo type, thickness from 2-4 mm.*



Banda con recubrimiento de hule natural grip top rojo, espesor de 11mm.  
*Timing belt with nat rubber rough top cover, thickness 11mm.*



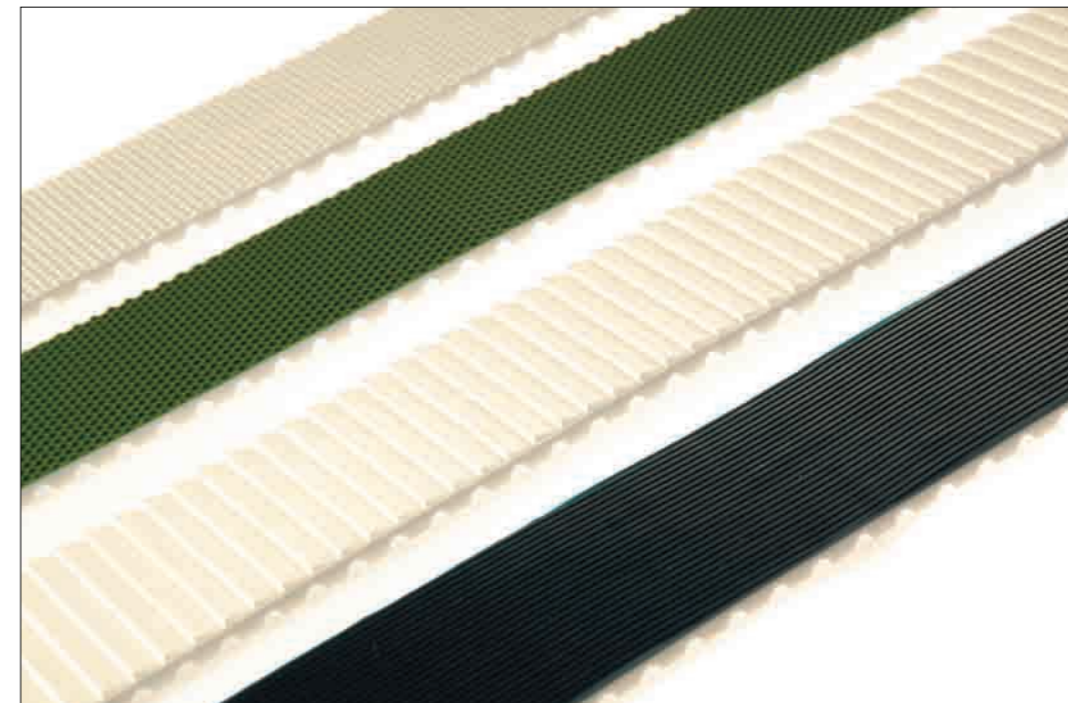
Banda con recubrimiento de Linatril® 55-60 Shore A  
*Timing belt with Linatril® cover 55-60 Sh A*



Banda con recubrimiento FDA de nitrilo blanco 55-60 Sh A  
*Timing belt with White FDA Nitrile cover 55-60 Sh A*



Bandas con recubrimientos especiales de PVC  
*Timing belts with PVC special profiles covers*



Bandas con recubrimiento de Griptop verde de PVC de 4.5mm de espesor.  
*Timing belts with PVC green Supergrip cover, thickness available in 4.5mm.*



Banda con recubrimiento de PVC perfil #5.  
*Timing belt with PVC profile #5 cover.*



Banda con recubrimiento de PVC ranurado perfil #19.  
*Timing belt with PVC ribbed profile #19 cover.*



Banda con recubrimiento de PVC FDA perfil #6 tipo diente de sierra.  
*Timing belt with PVC FDA profile #6 "saw tooth" cover.*



Banda dentada con recubrimiento de PVC FDA perfil #4  
*Timing belt with PVC FDA profile #4 cover*



**d) Bandas con perforaciones.**  
*Belts with perforations.*

Se pueden hacer perforaciones de cualquier tipo, redondas, rectangulares, cilíndricas y de cualquier forma que usted necesite. Fabricamos herramienta especial para hacer perforaciones con precisión y sin residuos.

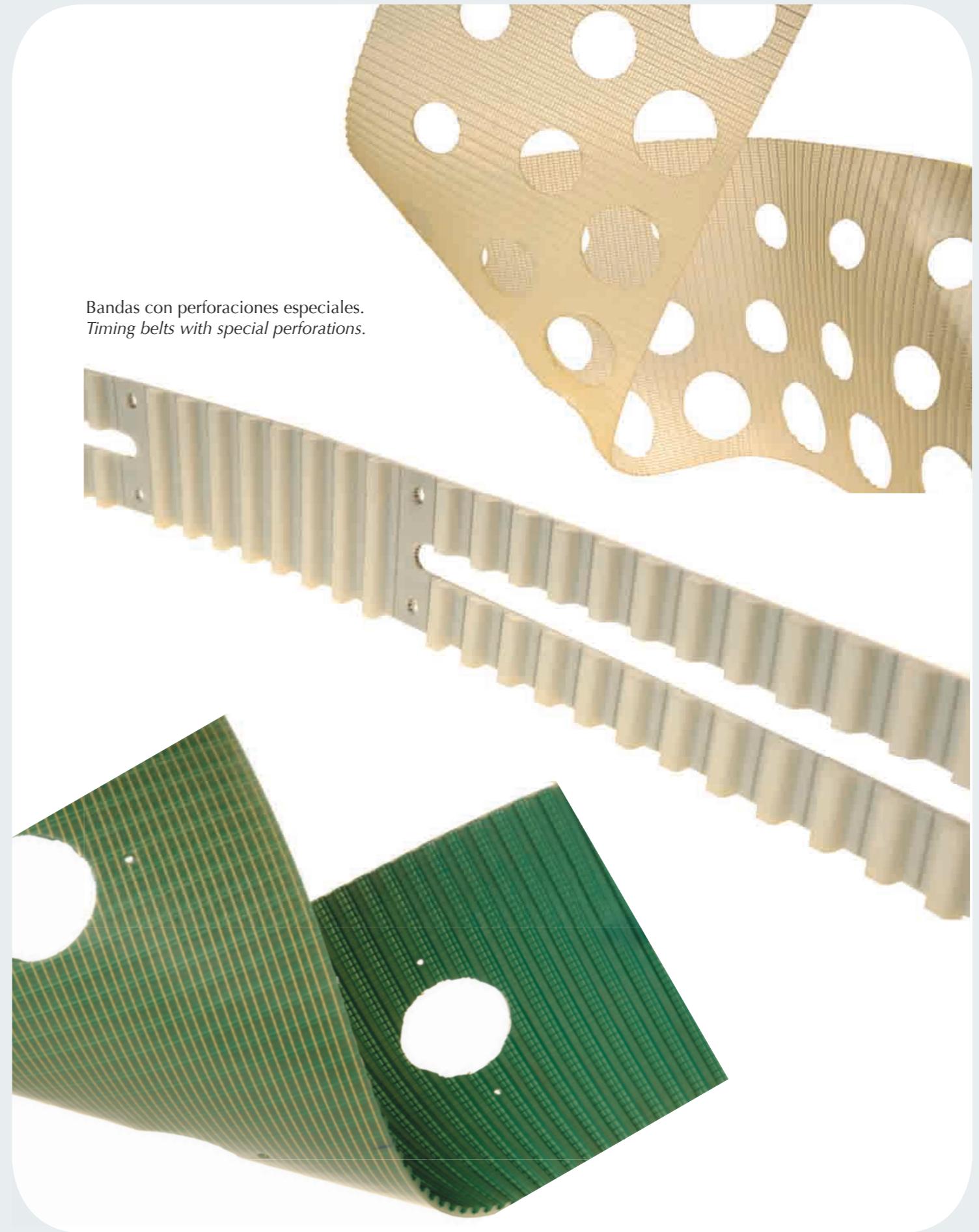
*We do perforations of any shape or form into belts, can be made round, square, cylindrical or any shape Custom made.*

*We manufacture our own tooling to do perforations precise and without any left overs.*





Bandas con perforaciones circulares.  
*Timing belts with round perforations.*



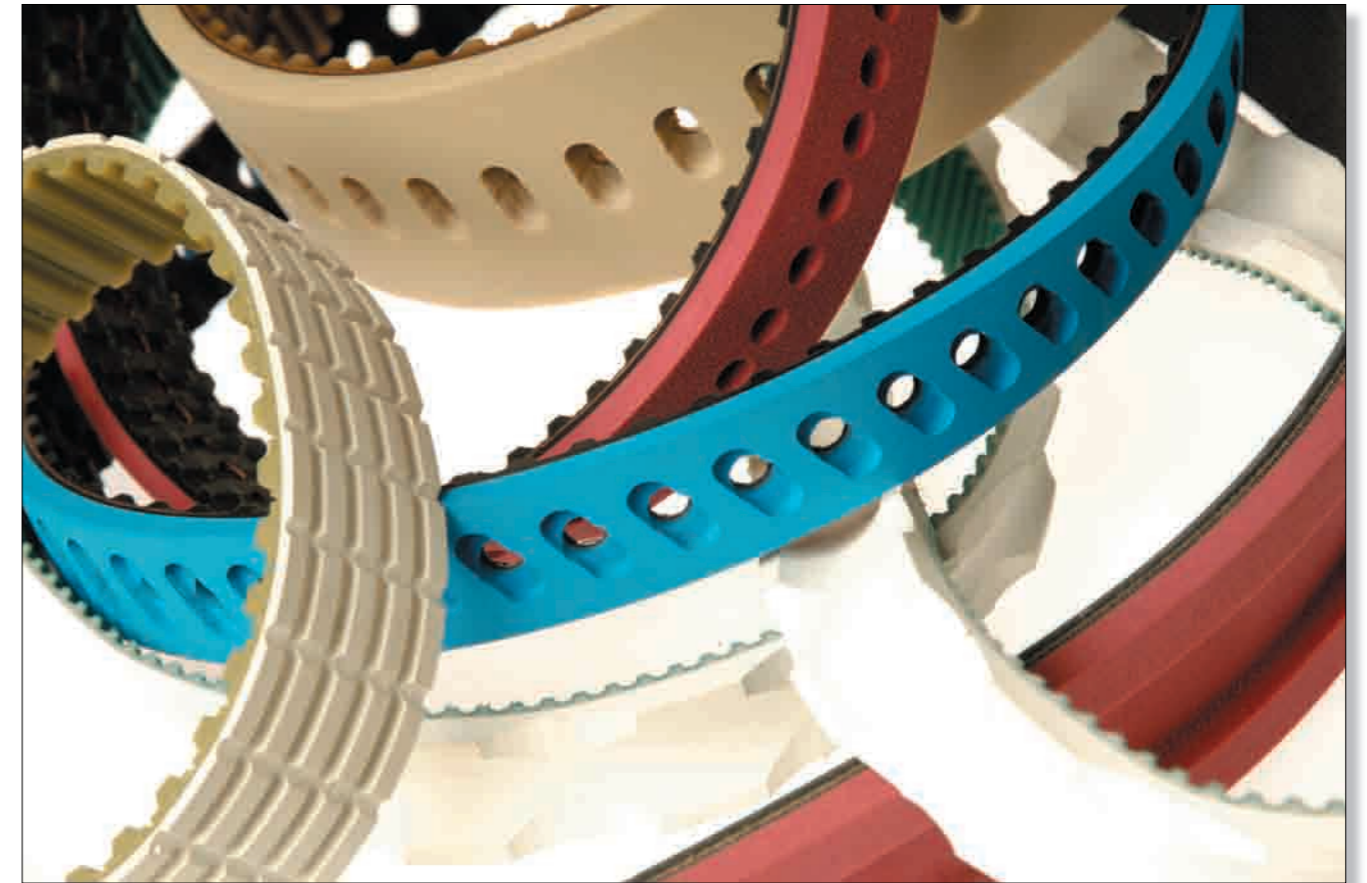
Bandas con perforaciones especiales.  
*Timing belts with special perforations.*

e) **Bandas con dientes rectificados.**

*Belts with grinded teeth.*

Podemos rectificar dientes en cualquier parte del dentado de la banda (a lo largo o ancho).

*We can grind on different parts of the timing belt (on the length or on the width).*



f) **Rectificado especial en recubrimientos**

*Special grinded covers.*

Los recubrimientos pueden tener rectificandos especiales para el transporte de diversos productos.

*Covers can be grinded to any specified shape, round, transversal, countersunk, longitudinal, or any custom made.*

Banda con perforaciones ovaladas.  
Countersunk perforations into a Linatex covered belt.



Rectificado longitudinal en banda poly V  
*Special longitudinal grinding into Linatex  
covered belt.*



Rectificado lateral y longitudinal  
en recubrimiento.  
*Special lateral and longitudinal  
grinding on a FDA cover of a belt.*

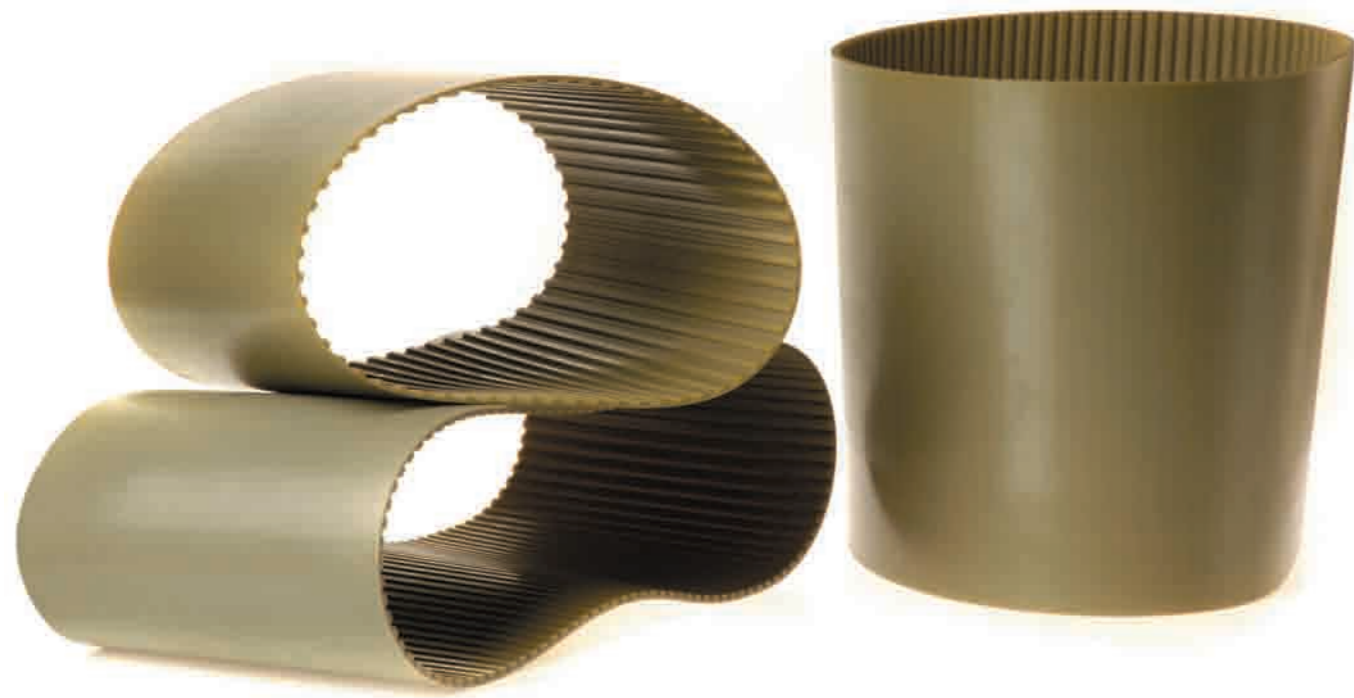


g) **Bandas dentadas con guías  
en parte dentada**  
*Timing belts with V guides  
welded on tooth side)*



Banda dentada con guías  
en parte superior.  
*Timing belt with V guides  
on flat surface.*

# Megapower Bandas dentadas de poliuretano / Urethane timing belts



Disponibles en pasos milimétricos con cuerdas de acero o kevlar, con anchos disponibles desde 4 mm hasta 300 mm.

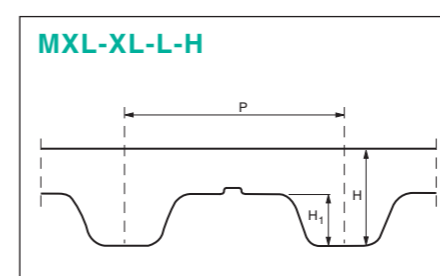
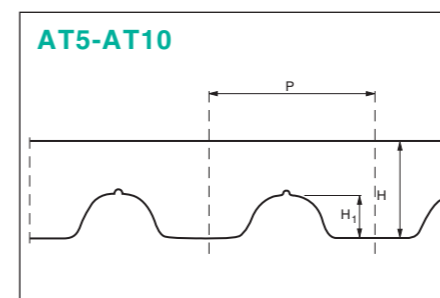
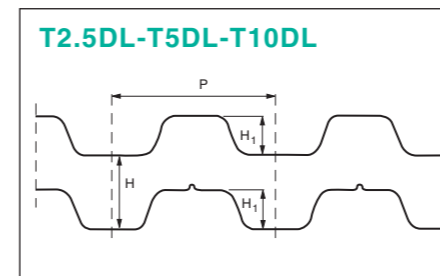
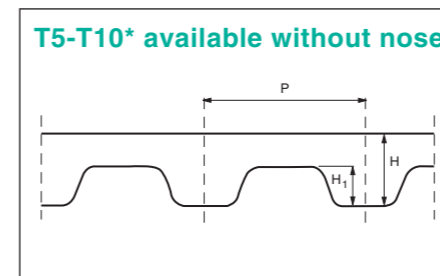
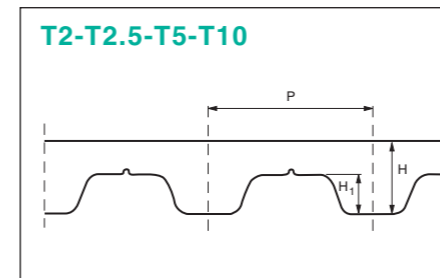
Available in metric pitches with steel or Kevlar® cords, from 4 mm. to 300 mm. width.

**T2.5, T5, T5-DL, T10, T10-DL, AT5 y AT10.**

Disponibles en pasos en pulgadas con cuerdas de acero o Kevlar®, con anchos disponibles desde .185" hasta 11".

Available on inch pitches with steel or Kevlar® cords, from .185" to 11" width.

**MXL, XL, L y H.**



| T 2.5               |                   |
|---------------------|-------------------|
| STANDARD WIDTH (MM) |                   |
| 4/6/8/10/12         |                   |
| CODE                | PITCH LENGTH (MM) |
| 120                 | 120               |
| 145                 | 145               |
| 160                 | 160               |
| 177,5               | 177,5             |
| 180                 | 180               |
| 182,5               | 182,5             |
| 200                 | 200               |
| 230                 | 230               |
| 245                 | 245               |
| 265                 | 265               |
| 285                 | 285               |
| 290                 | 290               |
| 305                 | 305               |
| 317,5               | 317,5             |
| 330                 | 330               |
| 380                 | 380               |
| 420                 | 420               |
| 480                 | 480               |
| 500                 | 500               |
| 540                 | 540               |
| 600                 | 600               |
| 620                 | 620               |
| 650                 | 650               |
| 680                 | 680               |
| 700                 | 700               |
| 780                 | 780               |
| 880                 | 880               |
| 915                 | 915               |
| 950                 | 950               |
| 1185                | 1185              |

|                |     |
|----------------|-----|
| P              | 2.5 |
| H              | 1.3 |
| H <sub>i</sub> | 0.7 |

| T2                  |  |
|---------------------|--|
| STANDARD WIDTH (MM) |  |
| 4/6/8/10/12         |  |

| T2                  |  |
|---------------------|--|
| STANDARD WIDTH (MM) |  |
| 180 180             |  |
| 200 200             |  |
| 288 288             |  |

|                |     |
|----------------|-----|
| P              | 2   |
| H              | 1.1 |
| H <sub>i</sub> | 0.5 |

| T 5                 |                   |
|---------------------|-------------------|
| STANDARD WIDTH (MM) |                   |
| 6/8/10/12/16/20/25  |                   |
| CODE                | PITCH LENGTH (MM) |
| 120                 | 120               |
| 150                 | 150               |
| 180                 | 180               |
| 185                 | 185               |
| 200                 | 200               |
| 210                 | 210               |
| 215                 | 215               |
| 220                 | 220               |
| 225                 | 225               |
| 245                 | 245               |
| 250                 | 250               |
| 255                 | 255               |
| 260                 | 260               |
| 270                 | 270               |
| 280                 | 280               |
| 295                 | 295               |
| 305                 | 305               |
| 330                 | 330               |
| 340                 | 340               |
| 350                 | 350               |
| 355                 | 355               |
| 365                 | 365               |
| 390                 | 390               |
| 400                 | 400               |
| 410                 | 410               |
| 420                 | 420               |
| 455                 | 455               |
| 460                 | 460               |
| 475                 | 475               |
| 480                 | 480               |
| 500                 | 500               |
| 510                 | 510               |
| 525                 | 525               |
| 545                 | 545               |
| 550                 | 550               |
| 560*                | 560*              |
| 575                 | 575               |
| 590                 | 590               |
| 610                 | 610               |
| 620                 | 620               |
| 630                 | 630               |
| 650                 | 650               |
| 660                 | 660               |
| 690                 | 690               |
| 720                 | 720               |
| 750                 | 750               |
| 765                 | 765               |
| 780                 | 780               |
| 815                 | 815               |
| 830                 | 830               |
| 840                 | 840               |
| 860                 | 860               |
| 885                 | 885               |
| 900                 | 900               |
| 940                 | 940               |
| 990                 | 990               |
| 1075                | 1075              |
| 1100                | 1100              |
| 1160                | 1160              |
| 1200                | 1200              |
| 1215                | 1215              |
| 1275                | 1275              |
| 1280                | 1280              |
| 1315                | 1315              |
| 1355                | 1355              |
| 1380                | 1380              |
| 1580                | 1580              |
| 1955                | 1955              |

|                |     |
|----------------|-----|
| P              | 5   |
| H              | 2.2 |
| H <sub>i</sub> | 1.2 |

| T 5                 |  |
|---------------------|--|
| STANDARD WIDTH (MM) |  |
| 6/8/10/12/16/20/25  |  |

| T 5                 |  |      |
|---------------------|--|------|
| STANDARD WIDTH (MM) |  |      |
| 120 120             |  |      |
| 150 150             |  |      |
| 180 180             |  |      |
| 185 185             |  |      |
| 200 200             |  |      |
| 210 210             |  |      |
| 215 215             |  |      |
| 220 220             |  |      |
| 225 225             |  |      |
| 245 245             |  |      |
| 250 250             |  |      |
| 255 255             |  |      |
| 260 260             |  |      |
| 270 270             |  |      |
| 280 280             |  |      |
| 295 295             |  |      |
| 305 305             |  |      |
| 330 330             |  |      |
| 340 340             |  |      |
| 350 350             |  |      |
| 355 355             |  |      |
| 365 365             |  |      |
| 390 390             |  |      |
| 400 400             |  |      |
| 410 410             |  |      |
| 420 420             |  |      |
| 455 455             |  |      |
| 460 460             |  |      |
| 475 475             |  |      |
| 480 480             |  |      |
| 500 500             |  |      |
| 510 510             |  |      |
| 525 525             |  |      |
| 545 545             |  |      |
| 550 550             |  |      |
| 560*                |  | 560* |
| 575 575             |  |      |
| 590 590             |  |      |
| 610 610             |  |      |
| 620 620             |  |      |
| 630 630             |  |      |
| 650 650             |  |      |
| 660 660             |  |      |
| 690 690             |  |      |
| 720 720             |  |      |
| 750 750             |  |      |
| 765 765             |  |      |
| 780 780             |  |      |
| 815 815             |  |      |
| 830 830             |  |      |
| 840 840             |  |      |
| 860 860             |  |      |
| 885 885             |  |      |
| 900 900             |  |      |
| 940 940             |  |      |
| 990 990             |  |      |
| 1075 1075           |  |      |
| 1100 1100           |  |      |
| 1160 1160           |  |      |
| 1200 1200           |  |      |
| 1215 1215           |  |      |
| 1275 1275           |  |      |
| 1280 1280           |  |      |
| 1315 1315           |  |      |
| 1355 1355           |  |      |
| 1380 1380           |  |      |
| 1580 1580           |  |      |
| 1955 1955           |  |      |

|                |     |
|----------------|-----|
| P              | 2   |
| H              | 1.1 |
| H <sub>i</sub> | 0.5 |

| T 10                    |                   |
|-------------------------|-------------------|
| STANDARD WIDTH (MM)     |                   |
| 10/12/16/20/25/32/50/75 |                   |
| CODE                    | PITCH LENGTH (MM) |
| 260                     | 260               |
| 340                     | 340               |
| 370                     | 370               |
| 390                     | 390               |
| 400                     | 400               |
| 410                     | 410               |
| 440                     | 440               |
| 480                     | 480               |
| 500                     | 500               |
| 530                     | 530               |
| 560                     | 560               |
| 600                     | 600               |
| 600*                    | 600*              |
| 610                     | 610               |
| 630                     | 630               |
| 630*                    | 630*              |
| 660                     | 660               |
| 680                     | 680               |
| 690                     | 690               |
| 700                     | 700               |
| 720                     | 720               |
| 730                     | 730               |
| 750                     | 750               |
| 780                     | 780               |
| 810                     | 810               |
| 840                     | 840               |
| 880                     | 880               |
| 890                     | 890               |
| 900                     | 900               |
| 900*                    | 900*              |
| 920                     | 920               |
| 920*                    | 920*              |
| 960                     | 960               |
| 970                     | 970               |
| 980                     | 980               |
| 1010                    | 1010              |
| 1080                    | 1080              |
| 1110                    | 1110              |
| 1140                    | 1140              |
| 1150                    | 1150              |
| 1210                    | 1210              |
| 1240                    | 1240              |
| 1250                    | 1250              |
| 1300                    | 1300              |
| 1320                    | 1320              |
| 1350                    | 1350              |
| 1390                    | 1390              |
| 1400                    | 1400              |
| 1420                    | 1420              |
| 1460                    | 1460              |
| 1500                    | 1500              |
| 1560                    | 1560              |
| 1610                    | 1610              |
| 1750                    | 1750              |
| 1780                    | 1780              |
| 1880                    | 1880              |
| 1960                    | 1960              |
| 2250                    | 2250              |

|                |      |
|----------------|------|
| P              | 10.0 |
| H              | 4.5  |
| H <sub>i</sub> | 2.5  |

| T 10                    |  |
|-------------------------|--|
| STANDARD WIDTH (MM)     |  |
| 10/12/16/20/25/32/50/75 |  |

| T 10                |  |      |
|---------------------|--|------|
| STANDARD WIDTH (MM) |  |      |
| 260 260             |  |      |
| 340 340             |  |      |
| 370 370             |  |      |
| 390 390             |  |      |
| 400 400             |  |      |
| 410 410             |  |      |
| 440 440             |  |      |
| 480 480             |  |      |
| 500 500             |  |      |
| 530 530             |  |      |
| 560 560             |  |      |
| 600 600             |  |      |
| 600*                |  | 600* |
| 610 610             |  |      |
| 630 630             |  |      |
| 630*                |  | 630* |
| 660 660             |  |      |
| 680 680             |  |      |
| 690 690             |  |      |
| 700 700             |  |      |
| 720 720             |  |      |
| 730 730             |  |      |
| 750 750             |  |      |
| 780 780             |  |      |
| 810 810             |  |      |
| 840 840             |  |      |
| 880 880             |  |      |
| 890 890             |  |      |
| 900 900             |  |      |
| 900*                |  | 900* |
| 920 920             |  |      |
| 920*                |  | 920* |
| 960 960             |  |      |
| 970 970             |  |      |
| 980 980             |  |      |
| 1010 1010           |  |      |
| 1080 1080           |  |      |
| 1110 1110           |  |      |
| 1140 1140           |  |      |
| 1150 1150           |  |      |
| 1210 1210           |  |      |
| 1240 1240           |  |      |
| 1250 1250           |  |      |
| 1300 1300           |  |      |
| 1320 1320           |  |      |
| 1350 1350           |  |      |
| 1390 1390           |  |      |
| 1400 1400           |  |      |
| 1420 1420           |  |      |
| 1460 1460           |  |      |
| 1500 1500           |  |      |
| 1560 1560           |  |      |
| 1610 1610           |  |      |
| 1750 1750           |  |      |
| 1780 1780           |  |      |
| 1880 1880           |  |      |
| 1960 1960           |  |      |
| 2250 2250           |  |      |

|                |      |
|----------------|------|
| P              | 10.0 |
| H              | 4.5  |
| H <sub>i</sub> | 2.5  |

| T 2.5 DL            |                   |
|---------------------|-------------------|
| STANDARD WIDTH (MM) |                   |
| 4/6/8/10/12         |                   |
| CODE                | PITCH LENGTH (MM) |
| 457,5 DL            | 457,5 DL          |

|                |     |
|----------------|-----|
| P              | 2.5 |
| H              | 1.3 |
| H <sub>i</sub> | 0.7 |

| T 5 DL              |  |
|---------------------|--|
| STANDARD WIDTH (MM) |  |
| 6/8/10/12/16/20/25  |  |

| T 5 DL  |                   |
|---------|-------------------|
| CODE    | PITCH LENGTH (MM) |
| 410 DL  | 410               |
| 460 DL  | 460               |
| 590 DL  | 590               |
| 620 DL  | 620               |
| 750 DL  | 750               |
| 815 DL  | 815               |
| 860 DL  | 860               |
| 940 DL  | 940               |
| 1100 DL | 1100              |

|                |     |
|----------------|-----|
| P              | 5   |
| H              | 2.2 |
| H <sub>i</sub> | 1.2 |

| T 10 DL                 |  |
|-------------------------|--|
| STANDARD WIDTH (MM)     |  |
| 10/12/16/20/25/32/50/75 |  |

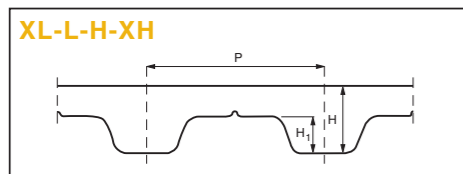
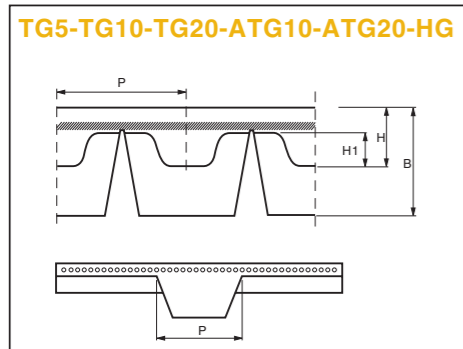
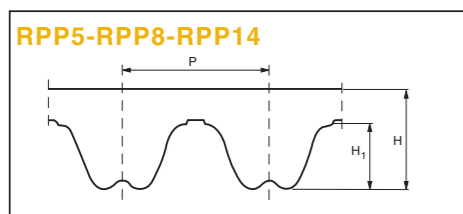
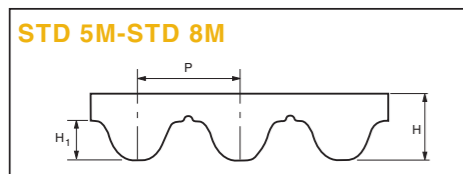
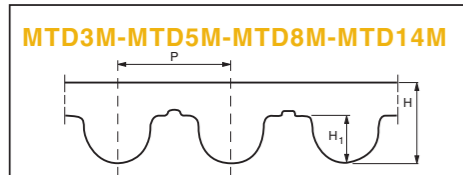
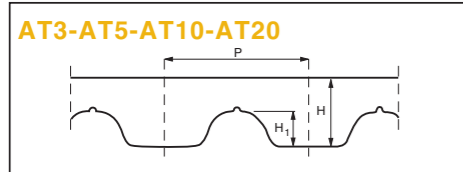
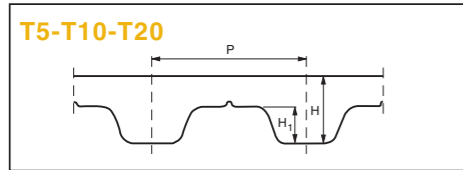
| T 10 DL |                   |
|---------|-------------------|
| CODE    | PITCH LENGTH (MM) |
| 260 DL  | 260               |
| 340 DL  | 340               |
| 370 DL  | 370               |
| 390 DL  | 390               |
| 400 DL  | 400               |
| 410 DL  | 410               |
| 440 DL  | 440               |
| 480 DL  | 480               |
| 500 DL  | 500               |
| 530 DL  | 530               |
| 560 DL  | 560               |
| 600 DL  | 600               |
| 600*    | 600*              |
| 610 DL  | 610               |
| 630 DL  | 630               |
| 630*    | 630*              |
| 660 DL  | 660               |
| 680 DL  | 680               |
| 690 DL  | 690               |
| 700 DL  | 700               |
| 720 DL  | 720               |
| 730 DL  | 730               |
| 750 DL  | 750               |
| 780 DL  | 780               |
| 810 DL  | 810               |
| 840 DL  | 840               |
| 880 DL  | 880               |
| 890 DL  | 890               |
| 900 DL  | 900               |
| 900*    | 900*              |
| 920 DL  | 920               |
| 920*    | 920*              |
| 960 DL  | 960               |
| 970 DL  | 970               |
| 980 DL  | 980               |
| 1010 DL | 1010              |
| 1080 DL | 1080              |
| 1110 DL | 1110              |
| 1140 DL | 1140              |
| 1150 DL | 1150              |
| 1210 DL | 1210              |
| 1240 DL | 1240              |
| 1250 DL | 1250              |
| 1300 DL | 1300              |
| 1320 DL | 1320              |
| 1350 DL | 1350              |
| 1390 DL | 1390              |
| 1400 DL | 1400              |
| 1420 DL | 1420              |
| 1460 DL | 1460              |
| 1500 DL | 1500              |
| 1560 DL | 1560              |
| 1610 DL | 1610              |
| 1750 DL | 1750              |
| 1780 DL | 1780              |
| 1880 DL | 1880              |
| 1960 DL | 1960              |
| 2250 DL | 2250              |

|                |      |
|----------------|------|
| P              | 10.0 |
| H              | 4.5  |
| H <sub>i</sub> | 2.5  |

| T 10 DL                 |  |
|-------------------------|--|
| STANDARD WIDTH (MM)     |  |
| 10/12/16/20/25/32/50/75 |  |

| T 10 DL |                   |
|---------|-------------------|
| CODE    | PITCH LENGTH (MM) |
| 260 DL  | 260               |
| 340 DL  | 340               |
| 370 DL  | 370               |
| 390 DL  | 390               |
| 400 DL  | 400               |
| 410 DL  | 410               |
| 440 DL  | 440               |
| 480 DL  | 480               |
| 500 DL  | 500               |
| 530 DL  | 530               |
| 560 DL  | 560               |
| 600 DL  | 600               |
| 600*    | 600*              |
| 610 DL  | 610               |
| 630 DL  | 630               |
| 630*    | 630*              |
| 660 DL  | 660               |
| 680 DL  | 680               |
| 690 DL  | 690               |
| 700 DL  | 700               |
| 720 DL  | 720               |
| 730 DL  | 730               |
| 750 DL  | 750               |
| 780 DL  | 780               |
| 810 DL  | 810               |
| 840 DL  | 840               |
| 880 DL  | 880               |
| 890 DL  | 890               |
| 900 DL  | 900               |
| 900*    | 900*              |
| 920 DL  | 920               |
| 920*    | 920*              |
| 960 DL  | 960               |
| 970 DL  | 970               |
| 980 DL  | 980               |
| 1010 DL | 1010              |
| 1080 DL | 1080              |
| 1110 DL | 1110              |





| MTD 3M              |  |
|---------------------|--|
| STANDARD WIDTH (MM) |  |
| 10                  |  |
| 20                  |  |
| 25                  |  |
| 50                  |  |
| P 3                 |  |
| H 2,2               |  |
| H <sub>i</sub> 1,13 |  |

| MTD 5M              |  |
|---------------------|--|
| STANDARD WIDTH (MM) |  |
| 10                  |  |
| 15                  |  |
| 25                  |  |
| 50                  |  |
| P 5                 |  |
| H 3,6               |  |
| H <sub>i</sub> 2,1  |  |

| MTD 8M              |  |
|---------------------|--|
| STANDARD WIDTH (MM) |  |
| 10                  |  |
| 15                  |  |
| 20                  |  |
| 30                  |  |
| 50                  |  |
| 85                  |  |
| 100                 |  |
| P 8                 |  |
| H 5,6               |  |
| H <sub>i</sub> 3,4  |  |

| MTD 14M             |  |
|---------------------|--|
| STANDARD WIDTH (MM) |  |
| 25                  |  |
| 40                  |  |
| 55                  |  |
| 85                  |  |
| 100                 |  |
| 115                 |  |
| P 14                |  |
| H 10,0              |  |
| H <sub>i</sub> 6,1  |  |

| XL                      |  |
|-------------------------|--|
| STANDARD WIDTH (INCHES) |  |
| 0,25                    |  |
| 0,31                    |  |
| 0,37                    |  |
| 0,50                    |  |
| 1,00                    |  |
| 1,50                    |  |
| P 5,08                  |  |
| H 2,30                  |  |
| H <sub>i</sub> 1,27     |  |

| L                       |  |
|-------------------------|--|
| STANDARD WIDTH (INCHES) |  |
| 0,37                    |  |
| 0,50                    |  |
| 0,75                    |  |
| 1,00                    |  |
| 1,50                    |  |
| 2,00                    |  |
| P 9,525                 |  |
| H 3,60                  |  |
| H <sub>i</sub> 1,90     |  |

| H                       |  |
|-------------------------|--|
| STANDARD WIDTH (INCHES) |  |
| 2,00                    |  |
| 0,50                    |  |
| 0,75                    |  |
| 1,00                    |  |
| 1,50                    |  |
| 2,00                    |  |
| 3,00                    |  |
| 4,00                    |  |
| 8,00*                   |  |
| P 12,7                  |  |
| H 4,30                  |  |
| H <sub>i</sub> 2,29     |  |

| XH                      |  |
|-------------------------|--|
| STANDARD WIDTH (INCHES) |  |
| 0,50                    |  |
| 1,00                    |  |
| 1,50                    |  |
| 2,00                    |  |
| 3,00                    |  |
| 4,00                    |  |
| 6,00                    |  |
| P 22,225                |  |
| H 11,2                  |  |
| H <sub>i</sub> 6,35     |  |

| AT3                 |  |
|---------------------|--|
| STANDARD WIDTH (MM) |  |
| 10                  |  |
| 20                  |  |
| 25                  |  |
| 50                  |  |
| P 3                 |  |
| H 1,9               |  |
| H <sub>i</sub> 1,1  |  |

| AT5                 |  |
|---------------------|--|
| STANDARD WIDTH (MM) |  |
| 6                   |  |
| 10                  |  |
| 16                  |  |
| 25                  |  |
| 32                  |  |
| 50                  |  |
| 75                  |  |
| 100                 |  |
| P 5                 |  |
| H 2,7               |  |
| H <sub>i</sub> 1,2  |  |

| AT10                |  |
|---------------------|--|
| STANDARD WIDTH (MM) |  |
| 16                  |  |
| 25                  |  |
| 32                  |  |
| 50                  |  |
| 75                  |  |
| 100                 |  |
| 150                 |  |
| P 10                |  |
| H 4,5               |  |
| H <sub>i</sub> 2,5  |  |

| AT20                |  |
|---------------------|--|
| STANDARD WIDTH (MM) |  |
| 25                  |  |
| 32                  |  |
| 50                  |  |
| 75                  |  |
| 100                 |  |
| 150                 |  |
| 200                 |  |
| P 20                |  |
| H 8,0               |  |
| H <sub>i</sub> 5,0  |  |

| TG5                 |  |
|---------------------|--|
| STANDARD WIDTH (MM) |  |
| 25                  |  |
| 32                  |  |
| 50                  |  |
| P 5                 |  |
| H 2,2               |  |
| H <sub>i</sub> 1,2  |  |
| B 6                 |  |
| h 47                |  |

| TG10 K6             |  |
|---------------------|--|
| STANDARD WIDTH (MM) |  |
| 50                  |  |
| P 10                |  |
| H 4,5               |  |
| H <sub>i</sub> 2,5  |  |
| B 6                 |  |
| h 4                 |  |

| TG10 K13            |  |
|---------------------|--|
| STANDARD WIDTH (MM) |  |
| 25                  |  |
| 32                  |  |
| 50                  |  |
| 75                  |  |
| 100                 |  |
| P 10                |  |
| H 4,5               |  |
| H <sub>i</sub> 2,5  |  |
| B 13                |  |
| h 6,5               |  |

| TG20                |  |
|---------------------|--|
| STANDARD WIDTH (MM) |  |
| 50                  |  |
| 75                  |  |
| 100                 |  |
| P 20                |  |
| H 8,0               |  |
| H <sub>i</sub> 5,0  |  |
| B 13                |  |
| h 6,5               |  |

| STD 5M              |  |
|---------------------|--|
| STANDARD WIDTH (MM) |  |
| 10                  |  |
| 20                  |  |
| 25                  |  |
| 50                  |  |
| P 5                 |  |
| H 3,4               |  |
| H <sub>i</sub> 1,91 |  |

| STD 8M              |  |
|---------------------|--|
| STANDARD WIDTH (MM) |  |
| 10                  |  |
| 12                  |  |
| 15                  |  |
| 20                  |  |
| 30                  |  |
| 50                  |  |
| 85                  |  |
| P 8,0               |  |
| H 5,1               |  |
| H <sub>i</sub> 3,05 |  |

| RPP5                |  |
|---------------------|--|
| STANDARD WIDTH (MM) |  |
| 10                  |  |
| 15                  |  |
| 25                  |  |
| 30                  |  |
| 50                  |  |
| P 5                 |  |
| H 3,8               |  |
| H <sub>i</sub> 2,0  |  |

| RPP8                |  |
|---------------------|--|
| STANDARD WIDTH (MM) |  |
| 10                  |  |
| 15                  |  |
| 20                  |  |
| 30                  |  |
| 50                  |  |
| 85                  |  |
| 100                 |  |
| P 8                 |  |
| H 5,4               |  |
| H <sub>i</sub> 3,2  |  |

| RPP14               |  |
|---------------------|--|
| STANDARD WIDTH (MM) |  |
| 40                  |  |
| 55                  |  |
| 85                  |  |
| 115                 |  |
| 150                 |  |
| P 14                |  |
| H 10,0              |  |
| H <sub>i</sub> 6,0  |  |

| T 5                 |  |
|---------------------|--|
| STANDARD WIDTH (MM) |  |
| 6                   |  |
| 10                  |  |
| 16                  |  |
| 25                  |  |
| 32                  |  |
| 50                  |  |
| 75                  |  |
| 100                 |  |
| P 5                 |  |
| H 2,2               |  |
| H <sub>i</sub> 1,2  |  |

| T 10                |  |
|---------------------|--|
| STANDARD WIDTH (MM) |  |
| 12                  |  |
| 16                  |  |
| 25                  |  |
| 32                  |  |
| 50                  |  |
| 75                  |  |
| 100                 |  |
| 150                 |  |
| 200*                |  |
| P 10                |  |
| H 4,5               |  |
| H <sub>i</sub> 2,5  |  |

| T 20                |  |
|---------------------|--|
| STANDARD WIDTH (MM) |  |
| 25                  |  |
| 32                  |  |
| 50                  |  |
| 75                  |  |
| 100                 |  |
| 150                 |  |
| P 20                |  |
| H 8,0               |  |
| H <sub>i</sub> 5,0  |  |

| ATG 10              |  |
|---------------------|--|
| STANDARD WIDTH (MM) |  |
| 32                  |  |
| 50                  |  |
| 75                  |  |
| 100                 |  |
| 150                 |  |
| P 10                |  |
| H 4,5               |  |
| H <sub>i</sub> 2,5  |  |
| B 13                |  |
| h 6,5               |  |

| ATG 20              |  |
|---------------------|--|
| STANDARD WIDTH (MM) |  |
| 150                 |  |
| P 20                |  |
| H 8,0               |  |
| H <sub>i</sub> 5,0  |  |
| B 13                |  |
| h 6,5               |  |

| HG K13              |  |
|---------------------|--|
| STANDARD WIDTH (MM) |  |
| 38,1                |  |
| 50,8                |  |
| 76,2                |  |
| 101,6               |  |
| P 12,7              |  |
| H 4,3               |  |
| H <sub>i</sub> 2,29 |  |
| B 13                |  |
| h 6,5               |  |

| P1                  |  |
|---------------------|--|
| STANDARD WIDTH (MM) |  |
| 10                  |  |
| 20                  |  |
| H 1,0               |  |

| P2                  |  |
|---------------------|--|
| STANDARD WIDTH (MM) |  |
| 25                  |  |
| 50                  |  |
| 75                  |  |
| 100                 |  |
| H 2,0               |  |

| P4                  |  |
|---------------------|--|
| STANDARD WIDTH (MM) |  |
| 20                  |  |
| 50                  |  |
| 55                  |  |
| H 4                 |  |

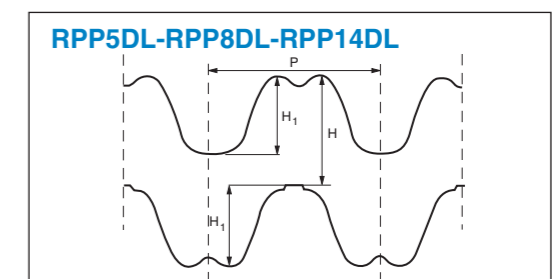
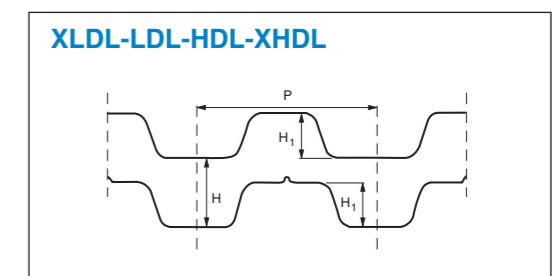
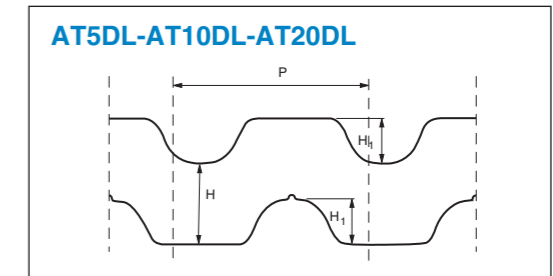
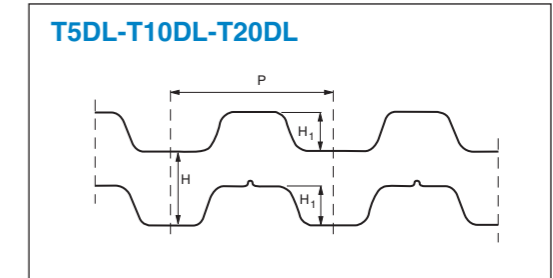
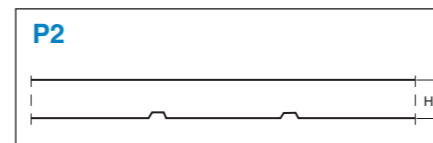
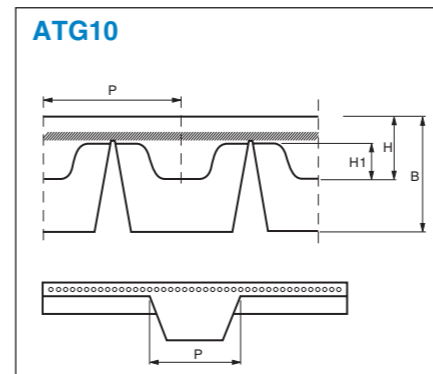
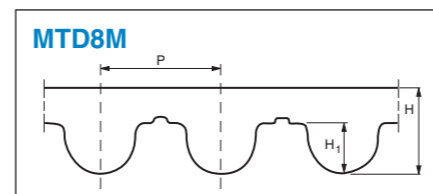
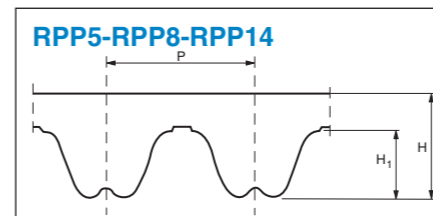
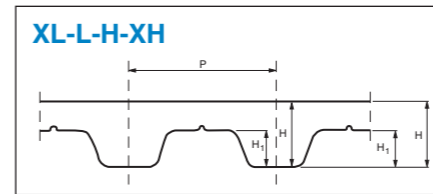
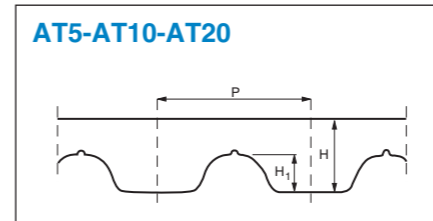
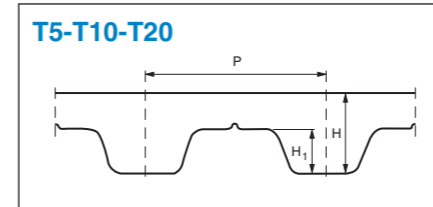
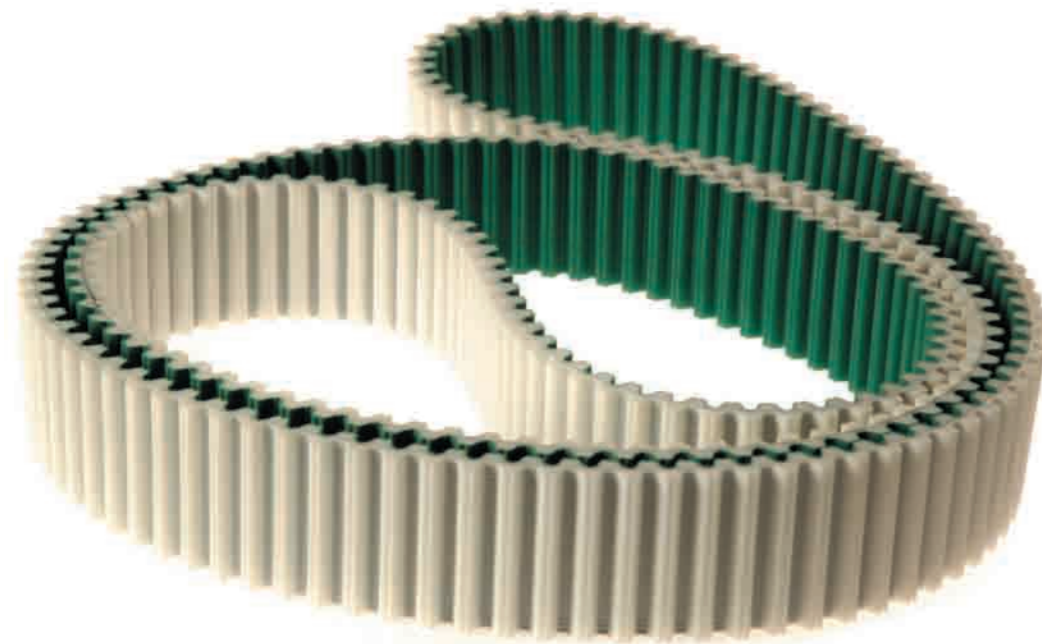
\* Only with Kevlar cords and 50% cords less

# Megaflex Bandas dentadas de poliuretano / Urethane timing belts

Las bandas Megaflex son bandas que se fabrican desde 1500 mm. de largo hasta 22,700 mm. de largo, estas bandas son totalmente sinfín (cuerdas continuas), pueden fabricarse en pasos doble dentado.

Pueden ser con nylon en el dentado desde 1900 mm. de longitud.

Megaflex belts are manufactured from 1500 mm. up to 22,700 mm length, this belts are truly endless, enabling them to delivery exceptional performance, can be used for power transmission, conveying with high loads and high speeds (up to 10,000 RPM), can also be manufactured as double sided, nylon on tooth side from 1900 mm. length.



| <b>P2</b><br>STANDARD WIDTH (MM) | <b>ATG10</b><br>STANDARD WIDTH (MM) | <b>MTD8M</b><br>STANDARD WIDTH (MM) |
|----------------------------------|-------------------------------------|-------------------------------------|
| 25                               | 10                                  | 10                                  |
| 50                               | 16                                  | 16                                  |
| 75                               | 25                                  | 25                                  |
| 100                              | 32                                  | 32                                  |
| 150                              | 50                                  | 50                                  |
|                                  | 75                                  | 75                                  |
|                                  | 100                                 | 100                                 |
|                                  | 150                                 | 150                                 |
| P 2.0                            | P 10                                | P 8                                 |
|                                  | H 4,5                               | H 5,6                               |
|                                  | H <sub>1</sub> 2,5                  | H <sub>1</sub> 3,4                  |

| T5/T5DL             |     | T10/T10DL           |     | T20/T20DL           |     |
|---------------------|-----|---------------------|-----|---------------------|-----|
| STANDARD WIDTH (MM) |     | STANDARD WIDTH (MM) |     | STANDARD WIDTH (MM) |     |
| 10                  |     | 10                  |     | 10                  |     |
| 16                  |     | 16                  |     | 16                  |     |
| 25                  |     | 25                  |     | 25                  |     |
| 32                  |     | 32                  |     | 32                  |     |
| 50                  |     | 50                  |     | 50                  |     |
| 75                  |     | 75                  |     | 75                  |     |
| 100                 |     | 100                 |     | 100                 |     |
| 150                 |     | 150                 |     | 150                 |     |
| P                   | 5   | P                   | 10  | P                   | 20  |
| H                   | 2,2 | H                   | 4,5 | H                   | 8,0 |
| H <sub>i</sub>      | 1,2 | H <sub>i</sub>      | 2,5 | H <sub>i</sub>      | 5,0 |

| AT5/AT5DL           |     | AT10/AT10DL         |     | AT20/AT20DL         |     |
|---------------------|-----|---------------------|-----|---------------------|-----|
| STANDARD WIDTH (MM) |     | STANDARD WIDTH (MM) |     | STANDARD WIDTH (MM) |     |
| 10                  |     | 10                  |     | 10                  |     |
| 16                  |     | 16                  |     | 16                  |     |
| 25                  |     | 25                  |     | 25                  |     |
| 32                  |     | 32                  |     | 32                  |     |
| 50                  |     | 50                  |     | 50                  |     |
| 75                  |     | 75                  |     | 75                  |     |
| 100                 |     | 100                 |     | 100                 |     |
| 150                 |     | 150                 |     | 150                 |     |
| P                   | 5   | P                   | 10  | P                   | 20  |
| H                   | 2,7 | H                   | 4,5 | H                   | 8,0 |
| H <sub>i</sub>      | 1,2 | H <sub>i</sub>      | 2,5 | H <sub>i</sub>      | 5,0 |

| RPP5/RPP5DL         |     | RPP8/RPP8DL         |      | RPP14/RPP14DL       |      |
|---------------------|-----|---------------------|------|---------------------|------|
| STANDARD WIDTH (MM) |     | STANDARD WIDTH (MM) |      | STANDARD WIDTH (MM) |      |
| 10                  |     | 10                  |      | 10                  |      |
| 15                  |     | 15                  |      | 15                  |      |
| 20                  |     | 20                  |      | 20                  |      |
| 25                  |     | 25                  |      | 25                  |      |
| 50                  |     | 50                  |      | 50                  |      |
| 85                  |     | 85                  |      | 85                  |      |
| 100                 |     | 100                 |      | 100                 |      |
| 150                 |     | 150                 |      | 150                 |      |
| P                   | 5   | P                   | 8    | P                   | 14   |
| H                   | 3,8 | H                   | 5,4  | H                   | 10,0 |
| H <sub>i</sub>      | 2,0 | H <sub>i</sub>      | 3,20 | H <sub>i</sub>      | 6,0  |

| XL/XLDL             |      | L/LDL               |       | H/HDL               |      | X/H                 |        |
|---------------------|------|---------------------|-------|---------------------|------|---------------------|--------|
| STANDARD WIDTH (MM) |      | STANDARD WIDTH (MM) |       | STANDARD WIDTH (MM) |      | STANDARD WIDTH (MM) |        |
| 19,53               |      | 19,53               |       | 19,53               |      | 19,53               |        |
| 12,7                |      | 12,7                |       | 12,7                |      | 12,7                |        |
| 19,1                |      | 19,1                |       | 19,1                |      | 19,1                |        |
| 25,4                |      | 25,4                |       | 25,4                |      | 25,4                |        |
| 38,1                |      | 38,1                |       | 38,1                |      | 38,1                |        |
| 50,8                |      | 50,8                |       | 50,8                |      | 50,8                |        |
| 76,2                |      | 76,2                |       | 76,2                |      | 76,2                |        |
| 101,6               |      | 101,6               |       | 101,6               |      | 101,6               |        |
| 152,4               |      | 152,4               |       | 152,4               |      | 152,4               |        |
| P                   | 5,08 | P                   | 9,525 | P                   | 12,7 | P                   | 22,225 |
| H                   | 2,3  | H                   | 3,6   | H                   | 4,3  | H                   | 11,2   |
| H <sub>i</sub>      | 1,27 | H <sub>i</sub>      | 1,9   | H <sub>i</sub>      | 2,29 | H <sub>i</sub>      | 6,35   |

# Poleas Poleas dentadas / Timing Pulleys



Poleas dentadas en pasos milimétricos tipo T5, T10, T20, AT5, AT10, AT20, 3M, 5M, 8M, 14M.  
 Poleas dentadas en pasos en pulgadas tipo XL, L, H, XH. Material de aluminio.

*We can supply timing pulleys on metric pitches T5, T10, T20, AT5, AT10, AT20, 3M, 5M, 8M, 14M. Inch pitch XL, L, H, XH. Aluminum material*

# Neopreno Bandas dentadas de neopreno / Neoprene timing belts

Manejamos un gran inventario de bandas dentadas de Neopreno en pasos milimétricos y en pulgadas así también como doble dentadas, Super-Torque, Isoran RPP.

*Our large inventory on Neoprene Timing belts contains metric and inch Pitches, also includes double sideds, Super-Torque, Isoran RPP.*

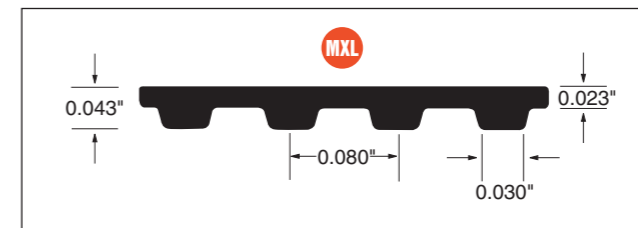
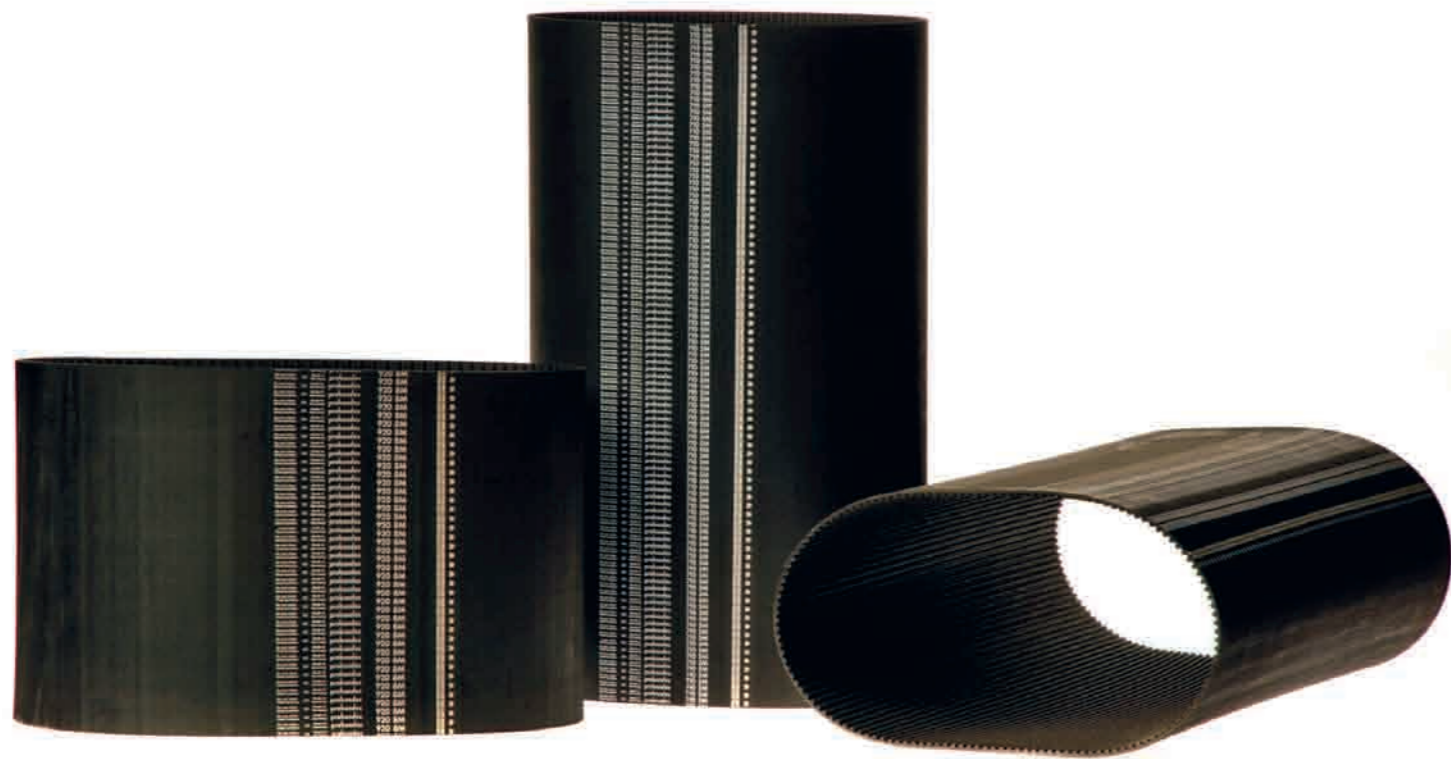
Pasos en Pulgadas  
(Inch Pitches)

MXL, XL, DXL, L, DL, H  
DH, XH, XXH.

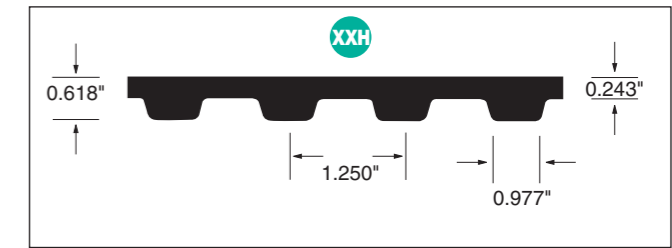
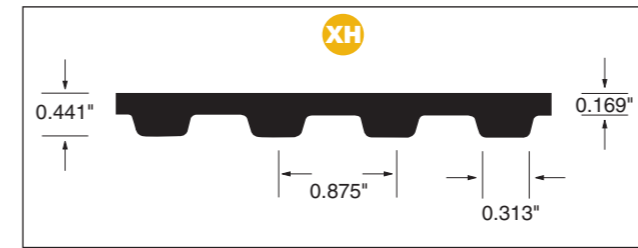
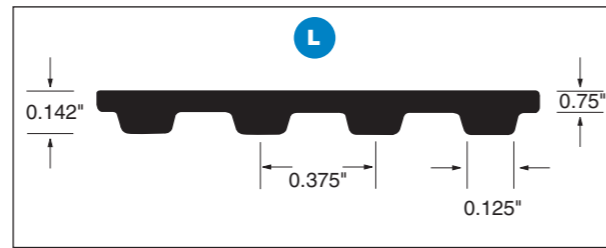
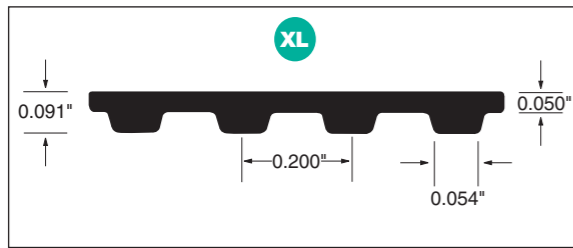
Pasos en Milímetros

(Metric Pitches) 3M, 5M, 8M, 14M.

*Super-Torque STS (Super-Torque STS)  
S2M, DS2M, S3M, DS3M, S4.5M,  
DS4.5M, S5M, S8M, DS8M, S14M,  
DS14M.*



| .080 Inch Pitch (MXL) — Neoprene (RMA) |              |              |              |              |              |              |              |              |              |              |              |              |              |              |              |
|--|--------------|--------------|--------------|--------------|--------------|--------------|--------------|--------------|--------------|--------------|--------------|--------------|--------------|--------------|--------------|
| No. of Teeth                           | No. of Teeth | No. of Teeth | No. of Teeth | No. of Teeth | No. of Teeth | No. of Teeth | No. of Teeth | No. of Teeth | No. of Teeth | No. of Teeth | No. of Teeth | No. of Teeth | No. of Teeth | No. of Teeth | No. of Teeth |
| 44 MXL                                 | 44           | 82 MXL       | 82           | 119 MXL      | 119          | 169 MXL      | 169          | 236 MXL      | 236          | 318 MXL      | 318          | 434 MXL      | 434          |              |              |
| 45 MXL                                 | 45           | 83 MXL       | 83           | 120 MXL      | 120          | 170 MXL      | 170          | 239 MXL      | 239          | 320 MXL      | 320          | 435 MXL      | 435          |              |              |
| 47 MXL                                 | 47           | 84 MXL       | 84           | 122 MXL      | 122          | 175 MXL      | 175          | 240 MXL      | 240          | 323 MXL      | 323          | 440 MXL      | 440          |              |              |
| 48 MXL                                 | 48           | 85 MXL       | 85           | 123 MXL      | 123          | 177 MXL      | 177          | 245 MXL      | 245          | 326 MXL      | 326          | 448 MXL      | 448          |              |              |
| 50 MXL                                 | 50           | 86 MXL       | 86           | 124 MXL      | 124          | 180 MXL      | 180          | 248 MXL      | 248          | 328 MXL      | 328          | 453 MXL      | 453          |              |              |
| 52 MXL                                 | 52           | 87 MXL       | 87           | 125 MXL      | 125          | 184 MXL      | 184          | 249 MXL      | 249          | 330 MXL      | 330          | 463 MXL      | 463          |              |              |
| 53 MXL                                 | 53           | 88 MXL       | 88           | 126 MXL      | 126          | 188 MXL      | 188          | 250 MXL      | 250          | 332 MXL      | 332          | 464 MXL      | 464          |              |              |
| 54 MXL                                 | 54           | 90 MXL       | 90           | 127 MXL      | 127          | 190 MXL      | 190          | 251 MXL      | 251          | 334 MXL      | 334          | 468 MXL      | 468          |              |              |
| 55 MXL                                 | 55           | 91 MXL       | 91           | 128 MXL      | 128          | 192 MXL      | 192          | 255 MXL      | 255          | 336 MXL      | 336          | 473 MXL      | 473          |              |              |
| 56 MXL                                 | 56           | 92 MXL       | 92           | 129 MXL      | 129          | 195 MXL      | 195          | 256 MXL      | 256          | 337 MXL      | 337          | 475 MXL      | 475          |              |              |
| 57 MXL                                 | 57           | 93 MXL       | 93           | 130 MXL      | 130          | 196 MXL      | 196          | 260 MXL      | 260          | 347 MXL      | 347          | 480 MXL      | 480          |              |              |
| 58 MXL                                 | 58           | 94 MXL       | 94           | 131 MXL      | 131          | 200 MXL      | 200          | 262 MXL      | 262          | 350 MXL      | 350          | 487 MXL      | 487          |              |              |
| 59 MXL                                 | 59           | 95 MXL       | 95           | 132 MXL      | 132          | 201 MXL      | 201          | 265 MXL      | 265          | 354 MXL      | 354          | 493 MXL      | 493          |              |              |
| 60 MXL                                 | 60           | 97 MXL       | 97           | 134 MXL      | 134          | 202 MXL      | 202          | 268 MXL      | 268          | 355 MXL      | 355          | 498 MXL      | 498          |              |              |
| 61 MXL                                 | 61           | 98 MXL       | 98           | 135 MXL      | 135          | 204 MXL      | 204          | 271 MXL      | 271          | 358 MXL      | 358          | 500 MXL      | 500          |              |              |
| 62 MXL                                 | 62           | 99 MXL       | 99           | 137 MXL      | 137          | 205 MXL      | 205          | 273 MXL      | 273          | 359 MXL      | 359          | 505 MXL      | 505          |              |              |
| 63 MXL                                 | 63           | 100 MXL      | 100          | 138 MXL      | 138          | 206 MXL      | 206          | 275 MXL      | 275          | 360 MXL      | 360          | 516 MXL      | 516          |              |              |
| 65 MXL                                 | 65           | 101 MXL      | 101          | 140 MXL      | 140          | 208 MXL      | 208          | 280 MXL      | 280          | 364 MXL      | 364          | 522 MXL      | 522          |              |              |
| 67 MXL                                 | 67           | 102 MXL      | 102          | 142 MXL      | 142          | 210 MXL      | 210          | 281 MXL      | 281          | 365 MXL      | 365          | 524 MXL      | 524          |              |              |
| 68 MXL                                 | 68           | 103 MXL      | 103          | 144 MXL      | 144          | 212 MXL      | 212          | 285 MXL      | 285          | 371 MXL      | 371          | 525 MXL      | 525          |              |              |
| 70 MXL                                 | 70           | 104 MXL      | 104          | 146 MXL      | 146          | 215 MXL      | 215          | 288 MXL      | 288          | 372 MXL      | 372          | 535 MXL      | 535          |              |              |
| 71 MXL                                 | 71           | 105 MXL      | 105          | 148 MXL      | 148          | 220 MXL      | 220          | 290 MXL      | 290          | 380 MXL      | 380          | 550 MXL      | 550          |              |              |
| 72 MXL                                 | 72           | 106 MXL      | 106          | 150 MXL      | 150          | 221 MXL      | 221          | 295 MXL      | 295          | 388 MXL      | 388          | 579 MXL      | 579          |              |              |
| 73 MXL                                 | 73           | 108 MXL      | 108          | 151 MXL      | 151          | 222 MXL      | 222          | 297 MXL      | 297          | 397 MXL      | 397          | 591 MXL      | 591          |              |              |
| 74 MXL                                 | 74           | 109 MXL      | 109          | 155 MXL      | 155          | 224 MXL      | 224          | 298 MXL      | 298          | 400 MXL      | 400          | 612 MXL      | 612          |              |              |
| 75 MXL                                 | 75           | 110 MXL      | 110          | 158 MXL      | 158          | 225 MXL      | 225          | 300 MXL      | 300          | 402 MXL      | 402          | 665 MXL      | 665          |              |              |
| 76 MXL                                 | 76           | 112 MXL      | 112          | 159 MXL      | 159          | 226 MXL      | 226          | 305 MXL      | 305          | 405 MXL      | 405          |              |              |              |              |
| 77 MXL                                 | 77           | 113 MXL      | 113          | 160 MXL      | 160          | 228 MXL      | 228          | 308 MXL      | 308          | 410 MXL      | 410          |              |              |              |              |
| 78 MXL                                 | 78           | 114 MXL      | 114          | 162 MXL      | 162          | 230 MXL      | 230          | 310 MXL      | 310          | 413 MXL      | 413          |              |              |              |              |
| 79 MXL                                 | 79           | 115 MXL      | 115          | 164 MXL      | 164          | 232 MXL      | 232          | 312 MXL      | 312          | 425 MXL      | 425          |              |              |              |              |
| 80 MXL                                 | 80           | 118 MXL      | 118          | 165 MXL      | 165          | 234 MXL      | 234          | 315 MXL      | 315          | 431 MXL      | 431          |              |              |              |              |

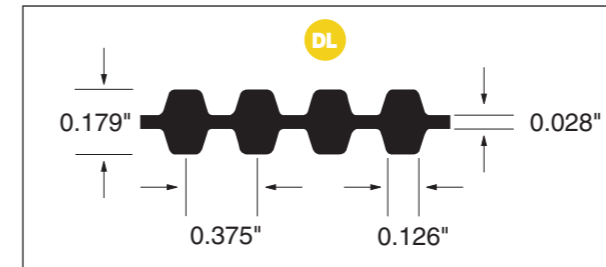
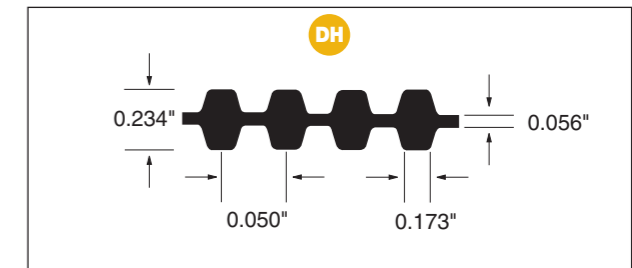
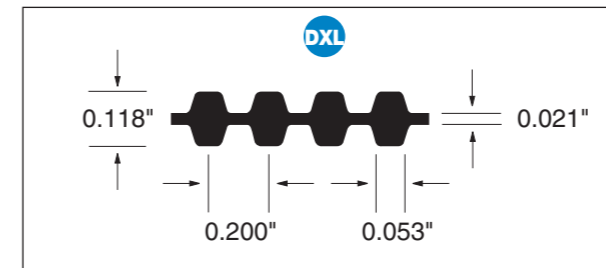


| 1/5 Inch Pitch (XL) – Neoprene (RMA) |              |              |              |              |
|--------------------------------------|--------------|--------------|--------------|--------------|
| No. of Teeth                         | No. of Teeth | No. of Teeth | No. of Teeth | No. of Teeth |
| 50 XL 26                             | 128 XL 64    | 198 XL 99    | 314 XL 157   | 450 XL 225   |
| 60 XL 30                             | 130 XL 65    | 200 XL 100   | 316 XL 158   | 456 XL 228   |
| 70 XL 35                             | 134 XL 67    | 202 XL 101   | 320 XL 160   | 460 XL 230   |
| 72 XL 36                             | 136 XL 68    | 206 XL 103   | 322 XL 161   | 470 XL 235   |
| 74 XL 37                             | 138 XL 69    | 208 XL 104   | 330 XL 165   | 490 XL 245   |
| 76 XL 38                             | 140 XL 70    | 210 XL 105   | 340 XL 170   | 496 XL 248   |
| 78 XL 39                             | 144 XL 72    | 212 XL 106   | 344 XL 172   | 498 XL 249   |
| 80 XL 40                             | 146 XL 73    | 214 XL 107   | 348 XL 174   | 506 XL 253   |
| 82 XL 41                             | 148 XL 74    | 220 XL 110   | 350 XL 175   | 510 XL 255   |
| 84 XL 42                             | 150 XL 75    | 228 XL 114   | 352 XL 176   | 514 XL 257   |
| 86 XL 43                             | 152 XL 76    | 230 XL 115   | 356 XL 178   | 564 XL 282   |
| 88 XL 44                             | 154 XL 77    | 234 XL 117   | 360 XL 180   | 580 XL 290   |
| 90 XL 45                             | 156 XL 78    | 240 XL 120   | 364 XL 182   | 592 XL 296   |
| 92 XL 46                             | 158 XL 79    | 244 XL 122   | 370 XL 185   | 608 XL 304   |
| 94 XL 47                             | 160 XL 80    | 248 XL 124   | 372 XL 186   | 630 XL 315   |
| 96 XL 48                             | 162 XL 81    | 250 XL 125   | 376 XL 188   | 638 XL 319   |
| 98 XL 49                             | 164 XL 82    | 260 XL 130   | 380 XL 190   | 686 XL 343   |
| 100 XL 50                            | 166 XL 83    | 262 XL 131   | 382 XL 191   | 730 XL 365   |
| 102 XL 51                            | 168 XL 84    | 266 XL 133   | 384 XL 192   | 828 XL 414   |
| 104 XL 52                            | 170 XL 85    | 270 XL 135   | 386 XL 193   | 860 XL 430   |
| 106 XL 53                            | 172 XL 86    | 272 XL 136   | 388 XL 194   | 888 XL 444   |
| 108 XL 54                            | 174 XL 87    | 274 XL 137   | 390 XL 195   | 900 XL 450   |
| 110 XL 55                            | 176 XL 88    | 276 XL 138   | 392 XL 196   | 908 XL 454   |
| 112 XL 56                            | 178 XL 89    | 280 XL 140   | 396 XL 198   | 912 XL 456   |
| 114 XL 57                            | 180 XL 90    | 282 XL 141   | 400 XL 200   | 914 XL 457   |
| 116 XL 58                            | 182 XL 91    | 286 XL 143   | 408 XL 204   | 926 XL 463   |
| 118 XL 59                            | 184 XL 92    | 290 XL 145   | 412 XL 206   | 1014 XL 507  |
| 120 XL 60                            | 188 XL 94    | 296 XL 148   | 414 XL 207   | 1020 XL 510  |
| 122 XL 61                            | 190 XL 95    | 300 XL 150   | 424 XL 212   |              |
| 124 XL 62                            | 194 XL 97    | 306 XL 153   | 430 XL 215   |              |
| 126 XL 63                            | 196 XL 98    | 310 XL 155   | 438 XL 219   |              |

| 3/8 Inch Pitch (L) – Neoprene (RMA) |              |              |
|-------------------------------------|--------------|--------------|
| No. of Teeth                        | No. of Teeth | No. of Teeth |
| 98 L 26                             | 322 L 86     | 581 L 155    |
| 109 L 29                            | 334 L 89     | 600 L 160    |
| 124 L 33                            | 337 L 90     | 605 L 161    |
| 135 L 36                            | 345 L 92     | 619 L 165    |
| 150 L 40                            | 360 L 96     | 630 L 168    |
| 165 L 44                            | 367 L 98     | 640 L 170    |
| 169 L 45                            | 375 L 100    | 653 L 174    |
| 172 L 46                            | 382 L 102    | 660 L 176    |
| 187 L 50                            | 390 L 104    | 697 L 186    |
| 203 L 54                            | 394 L 105    | 728 L 194    |
| 210 L 56                            | 420 L 112    | 731 L 195    |
| 225 L 60                            | 427 L 114    | 767 L 205    |
| 236 L 63                            | 436 L 116    | 780 L 208    |
| 240 L 64                            | 439 L 117    | 788 L 210    |
| 244 L 65                            | 446 L 119    | 806 L 215    |
| 255 L 68                            | 450 L 120    | 855 L 228    |
| 263 L 70                            | 454 L 121    | 863 L 230    |
| 270 L 72                            | 465 L 124    | 881 L 235    |
| 277 L 74                            | 480 L 128    | 915 L 244    |
| 285 L 76                            | 510 L 136    | 919 L 245    |
| 300 L 80                            | 514 L 137    | 938 L 250    |
| 304 L 81                            | 525 L 140    | 1294 L 345   |
| 315 L 84                            | 540 L 144    |              |
| 320 L 85                            | 548 L 146    |              |

| 7/8 Inch Pitch (XH) – Neoprene (RMA) |              |              |
|--------------------------------------|--------------|--------------|
| No. of Teeth                         | No. of Teeth | No. of Teeth |
| 507 XH 58                            | 840 XH 96    | 1260XH 144   |
| 560 XH 64                            | 875 XH 100   | 1400XH 160   |
| 630 XH 72                            | 927 XH 106   | 1540XH 176   |
| 700 XH 80                            | 980 XH 112   | 1750 XH 200  |
| 770 XH 88                            | 1120 XH 128  |              |

| 1-1/4 Inch Pitch (XXH) Neoprene (RMA) |          |
|---------------------------------------|----------|
| 700 XXH                               | 1400 XXH |
| 800 XXH                               | 1600 XXH |
| 900 XXH                               | 1800 XXH |
| 1000 XXH                              | 1915 XXH |
| 1200 XXH                              |          |

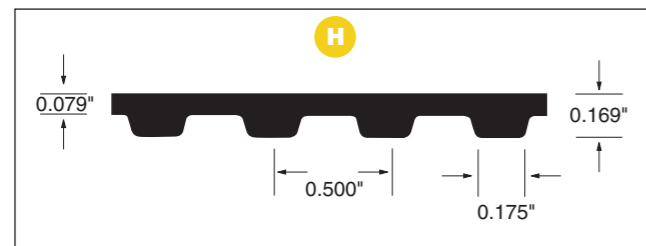


| 1/2 Inch Pitch (DH) – Neoprene (RMA) |              |              |
|--------------------------------------|--------------|--------------|
| No. of Teeth                         | No. of Teeth | No. of Teeth |
| 185 DH 37                            | 430 DH 86    | 770 DH 154   |
| 230 DH 46                            | 450 DH 90    | 800 DH 160   |
| 240 DH 48                            | 465 DH 93    | 810 DH 162   |
| 245 DH 49                            | 480 DH 96    | 820 DH 164   |
| 270 DH 54                            | 490 DH 98    | 840 DH 168   |
| 280 DH 56                            | 510 DH 102   | 850 DH 170   |
| 300 DH 60                            | 530 DH 106   | 860 DH 172   |
| 310 DH 62                            | 540 DH 108   | 880 DH 176   |
| 315 DH 63                            | 560 DH 112   | 900 DH 180   |
| 320 DH 64                            | 570 DH 114   | 950 DH 190   |
| 330 DH 66                            | 580 DH 116   | 985 DH 197   |
| 335 DH 67                            | 600 DH 120   | 1000 DH 200  |
| 340 DH 68                            | 605 DH 121   | 1020 DH 204  |
| 350 DH 70                            | 630 DH 126   | 1050 DH 210  |
| 360 DH 72                            | 650 DH 130   | 1100 DH 220  |
| 370 DH 74                            | 660 DH 132   | 1140 DH 228  |
| 375 DH 75                            | 680 DH 136   | 1250 DH 250  |
| 390 DH 78                            | 700 DH 140   | 1350 DH 270  |
| 400 DH 80                            | 730 DH 146   | 1400 DH 280  |
| 410 DH 82                            | 750 DH 150   | 1700 DH 340  |
| 420 DH 84                            | 760 DH 152   |              |

| 1/2 Inch Pitch (H) – Neoprene (RMA) |              |              |
|-------------------------------------|--------------|--------------|
| No. of Teeth                        | No. of Teeth | No. of Teeth |
| 185 H 37                            | 430 H 86     | 770 H 154    |
| 225 H 45                            | 450 H 90     | 800 H 160    |
| 230 H 46                            | 465 H 93     | 810 H 162    |
| 240 H 48                            | 480 H 96     | 820 H 164    |
| 245 H 49                            | 490 H 98     | 840 H 168    |
| 255 H 51                            | 510 H 102    | 850 H 170    |
| 270 H 54                            | 530 H 106    | 860 H 172    |
| 280 H 56                            | 540 H 108    | 880 H 176    |
| 300 H 60                            | 560 H 112    | 900 H 180    |
| 310 H 62                            | 565 H 113    | 950 H 190    |
| 315 H 63                            | 570 H 114    | 985 H 197    |
| 320 H 64                            | 580 H 116    | 1000 H 200   |
| 330 H 66                            | 600 H 120    | 1020 H 204   |
| 335 H 67                            | 605 H 121    | 1050 H 210   |
| 340 H 68                            | 630 H 126    | 1100 H 220   |
| 350 H 70                            | 640 H 128    | 1130 H 226   |
| 360 H 72                            | 650 H 130    | 1140 H 228   |
| 370 H 74                            | 660 H 132    | 1250 H 250   |
| 375 H 75                            | 680 H 136    | 1325 H 265   |
| 390 H 78                            | 700 H 140    | 1350 H 270   |
| 400 H 80                            | 730 H 146    | 1400 H 280   |
| 410 H 82                            | 750 H 150    | 1680 H 336   |
| 420 H 84                            | 760 H 152    | 1700 H 340   |

| 1/5 Inch Pitch (DXL) – Neoprene (RMA) |             |             |
|---------------------------------------|-------------|-------------|
| 160 DXL 80                            | 220 DXL 110 | 356 DXL 178 |
| 162 DXL 81                            | 228 DXL 114 | 360 DXL 180 |
| 166 DXL 83                            | 230 DXL 115 | 364 DXL 182 |
| 168 DXL 84                            | 234 DXL 117 | 376 DXL 188 |
| 170 DXL 85                            | 240 DXL 120 | 384 DXL 192 |
| 172 DXL 86                            | 250 DXL 125 | 390 DXL 195 |
| 176 DXL 88                            | 260 DXL 130 | 396 DXL 198 |
| 180 DXL 90                            | 262 DXL 131 | 400 DXL 200 |
| 182 DXL 91                            | 270 DXL 135 | 408 DXL 204 |
| 184 DXL 92                            | 280 DXL 140 | 424 DXL 212 |
| 188 DXL 94                            | 290 DXL 145 | 430 DXL 215 |
| 190 DXL 95                            | 300 DXL 150 | 450 DXL 225 |
| 196 DXL 98                            | 310 DXL 155 | 456 DXL 228 |
| 198 DXL 99                            | 314 DXL 157 | 460 DXL 230 |
| 200 DXL 100                           | 320 DXL 160 | 490 DXL 245 |
| 202 DXL 101                           | 330 DXL 165 | 592 DXL 296 |
| 206 DXL 103                           | 340 DXL 170 | 608 DXL 304 |
| 208 DXL 104                           | 344 DXL 172 | 630 DXL 315 |
| 210 DXL 105                           | 348 DXL 174 |             |
| 212 DXL 106                           | 352 DXL 176 |             |

| 3/8 Inch Pitch (DL) – Neoprene (RMA) |            |            |
|--------------------------------------|------------|------------|
| 165 DL 44                            | 345 DL 92  | 600 DL 160 |
| 169 DL 45                            | 360 DL 96  | 605 DL 161 |
| 172 DL 46                            | 367 DL 98  | 619 DL 165 |
| 187 DL 50                            | 375 DL 100 | 640 DL 170 |
| 203 DL 54                            | 382 DL 102 | 653 DL 174 |
| 210 DL 56                            | 390 DL 104 | 660 DL 176 |
| 225 DL 60                            | 420 DL 112 | 697 DL 186 |
| 240 DL 64                            | 427 DL 114 | 728 DL 194 |
| 255 DL 68                            | 436 DL 116 | 731 DL 195 |
| 263 DL 70                            | 439 DL 117 | 767 DL 205 |
| 270 DL 72                            | 446 DL 119 | 780 DL 208 |
| 277 DL 74                            | 450 DL 120 | 788 DL 210 |
| 285 DL 76                            | 454 DL 121 | 806 DL 215 |
| 300 DL 80                            | 465 DL 124 | 855 DL 228 |
| 304 DL 81                            | 480 DL 128 | 863 DL 230 |
| 315 DL 84                            | 510 DL 136 | 881 DL 235 |
| 320 DL 85                            | 514 DL 137 | 915 DL 244 |
| 322 DL 86                            | 525 DL 140 | 919 DL 245 |
| 334 DL 89                            | 548 DL 146 | 938 DL 250 |
| 337 DL 90                            | 581 DL 155 |            |

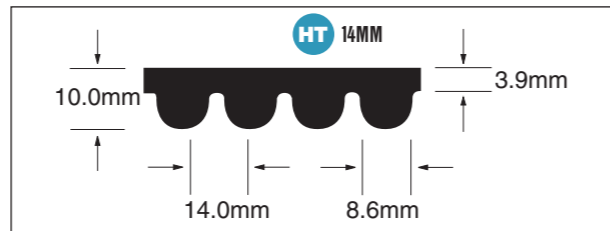


**3MM Pitch (HT) – Neoprene (Metric)**

|        |        |         |
|--------|--------|---------|
| 111-3M | 267-3M | 606-3M  |
| 117-3M | 300-3M | 612-3M  |
| 129-3M | 318-3M | 633-3M  |
| 141-3M | 336-3M | 669-3M  |
| 144-3M | 339-3M | 708-3M  |
| 150-3M | 363-3M | 711-3M  |
| 159-3M | 384-3M | 738-3M  |
| 168-3M | 390-3M | 753-3M  |
| 174-3M | 420-3M | 822-3M  |
| 177-3M | 447-3M | 843-3M  |
| 180-3M | 474-3M | 882-3M  |
| 186-3M | 480-3M | 945-3M  |
| 204-3M | 489-3M | 960-3M  |
| 210-3M | 495-3M | 1041-3M |
| 213-3M | 501-3M | 1068-3M |
| 216-3M | 513-3M | 1071-3M |
| 225-3M | 522-3M | 1125-3M |
| 240-3M | 525-3M | 1176-3M |
| 246-3M | 537-3M | 1245-3M |
| 252-3M | 564-3M | 1569-3M |
| 255-3M | 570-3M |         |

**5MM Pitch (HT) – Neoprene (Metric)**

|        |        |         |
|--------|--------|---------|
| 225-5M | 475-5M | 800-5M  |
| 265-5M | 500-5M | 835-5M  |
| 275-5M | 535-5M | 890-5M  |
| 295-5M | 565-5M | 900-5M  |
| 300-5M | 600-5M | 925-5M  |
| 330-5M | 615-5M | 1000-5M |
| 350-5M | 630-5M | 1050-5M |
| 375-5M | 635-5M | 1125-5M |
| 400-5M | 665-5M | 1270-5M |
| 425-5M | 700-5M | 1500-5M |
| 450-5M | 710-5M |         |
| 460-5M | 755-5M |         |



**14MM Pitch (HT) – Neoprene (Metric)**

|          |          |          |
|----------|----------|----------|
| 966-14M  | 2100-14M | 3500-14M |
| 1190-14M | 2310-14M | 3850-14M |
| 1400-14M | 2450-14M | 4326-14M |
| 1610-14M | 2590-14M | 4578-14M |
| 1778-14M | 2800-14M |          |
| 1890-14M | 3150-14M |          |

**2MM Pitch (STS) – Neoprene (Metric)**

|         |         |          |
|---------|---------|----------|
| S2M-88  | S2M-230 | S2M-452  |
| S2M-90  | S2M-234 | S2M-454  |
| S2M-92  | S2M-240 | S2M-460  |
| S2M-94  | S2M-242 | S2M-474  |
| S2M-98  | S2M-244 | S2M-486  |
| S2M-100 | S2M-248 | S2M-490  |
| S2M-102 | S2M-250 | S2M-494  |
| S2M-106 | S2M-254 | S2M-500  |
| S2M-112 | S2M-258 | S2M-520  |
| S2M-114 | S2M-260 | S2M-530  |
| S2M-116 | S2M-262 | S2M-540  |
| S2M-118 | S2M-266 | S2M-550  |
| S2M-120 | S2M-272 | S2M-560  |
| S2M-122 | S2M-274 | S2M-558  |
| S2M-124 | S2M-280 | S2M-572  |
| S2M-126 | S2M-284 | S2M-594  |
| S2M-128 | S2M-288 | S2M-596  |
| S2M-130 | S2M-290 | S2M-600  |
| S2M-132 | S2M-292 | S2M-620  |
| S2M-134 | S2M-296 | S2M-630  |
| S2M-138 | S2M-300 | S2M-652  |
| S2M-140 | S2M-308 | S2M-656  |
| S2M-142 | S2M-310 | S2M-658  |
| S2M-144 | S2M-312 | S2M-676  |
| S2M-148 | S2M-314 | S2M-692  |
| S2M-150 | S2M-316 | S2M-700  |
| S2M-152 | S2M-318 | S2M-710  |
| S2M-158 | S2M-320 | S2M-742  |
| S2M-160 | S2M-322 | S2M-752  |
| S2M-162 | S2M-324 | S2M-754  |
| S2M-164 | S2M-328 | S2M-766  |
| S2M-166 | S2M-330 | S2M-796  |
| S2M-168 | S2M-332 | S2M-800  |
| S2M-170 | S2M-340 | S2M-810  |
| S2M-172 | S2M-342 | S2M-846  |
| S2M-174 | S2M-344 | S2M-898  |
| S2M-176 | S2M-350 | S2M-900  |
| S2M-180 | S2M-364 | S2M-940  |
| S2M-184 | S2M-370 | S2M-946  |
| S2M-186 | S2M-372 | S2M-950  |
| S2M-190 | S2M-376 | S2M-984  |
| S2M-192 | S2M-380 | S2M-1000 |
| S2M-198 | S2M-386 | S2M-1032 |
| S2M-200 | S2M-390 | S2M-1036 |
| S2M-202 | S2M-396 | S2M-1066 |
| S2M-204 | S2M-400 | S2M-1074 |
| S2M-210 | S2M-406 | S2M-1100 |
| S2M-212 | S2M-408 | S2M-1136 |
| S2M-214 | S2M-416 | S2M-1154 |
| S2M-216 | S2M-420 | S2M-1166 |
| S2M-218 | S2M-426 | S2M-1224 |
| S2M-220 | S2M-428 | S2M-1228 |
| S2M-222 | S2M-438 |          |
| S2M-224 | S2M-448 |          |

**3MM Pitch (STS) – Neoprene (Metric)**

|         |         |          |
|---------|---------|----------|
| S3M-123 | S3M-312 | S3M-549  |
| S3M-129 | S3M-315 | S3M-552  |
| S3M-144 | S3M-318 | S3M-555  |
| S3M-150 | S3M-324 | S3M-564  |
| S3M-159 | S3M-327 | S3M-573  |
| S3M-162 | S3M-330 | S3M-579  |
| S3M-168 | S3M-339 | S3M-588  |
| S3M-171 | S3M-342 | S3M-597  |
| S3M-174 | S3M-351 | S3M-600  |
| S3M-177 | S3M-354 | S3M-609  |
| S3M-180 | S3M-360 | S3M-621  |
| S3M-186 | S3M-363 | S3M-633  |
| S3M-189 | S3M-366 | S3M-648  |
| S3M-192 | S3M-372 | S3M-651  |
| S3M-195 | S3M-378 | S3M-657  |
| S3M-201 | S3M-384 | S3M-660  |
| S3M-204 | S3M-387 | S3M-666  |
| S3M-207 | S3M-390 | S3M-681  |
| S3M-210 | S3M-399 | S3M-690  |
| S3M-213 | S3M-402 | S3M-699  |
| S3M-219 | S3M-405 | S3M-726  |
| S3M-222 | S3M-408 | S3M-735  |
| S3M-225 | S3M-417 | S3M-741  |
| S3M-228 | S3M-420 | S3M-749  |
| S3M-234 | S3M-423 | S3M-750  |
| S3M-237 | S3M-426 | S3M-768  |
| S3M-240 | S3M-432 | S3M-771  |
| S3M-243 | S3M-438 | S3M-789  |
| S3M-246 | S3M-444 | S3M-804  |
| S3M-249 | S3M-447 | S3M-810  |
| S3M-252 | S3M-453 | S3M-825  |
| S3M-255 | S3M-459 | S3M-852  |
| S3M-258 | S3M-468 | S3M-882  |
| S3M-264 | S3M-471 | S3M-885  |
| S3M-267 | S3M-480 | S3M-888  |
| S3M-270 | S3M-489 | S3M-900  |
| S3M-273 | S3M-492 | S3M-918  |
| S3M-276 | S3M-498 | S3M-927  |
| S3M-279 | S3M-501 | S3M-936  |
| S3M-282 | S3M-507 | S3M-990  |
| S3M-285 | S3M-516 | S3M-1119 |
| S3M-288 | S3M-519 | S3M-1146 |
| S3M-291 | S3M-522 | S3M-1188 |
| S3M-297 | S3M-525 | S3M-1299 |
| S3M-300 | S3M-534 | S3M-1530 |
| S3M-303 | S3M-537 | S3M-2082 |
| S3M-309 | S3M-540 |          |

**3MM Pitch (DHT) – Neoprene (Metric)**

|         |         |          |
|---------|---------|----------|
| 420-D3M | 537-D3M | 843-D3M  |
| 447-D3M | 564-D3M | 882-D3M  |
| 474-D3M | 570-D3M | 945-D3M  |
| 480-D3M | 606-D3M | 960-D3M  |
| 489-D3M | 612-D3M | 1041-D3M |
| 495-D3M | 633-D3M | 1068-D3M |
| 501-D3M | 669-D3M | 1071-D3M |
| 513-D3M | 708-D3M | 1125-D3M |
| 522-D3M | 711-D3M | 1176-D3M |
| 525-D3M | 753-D3M | 1569-D3M |

**5MM Pitch (DHT) – Neoprene (Metric)**

|         |          |          |
|---------|----------|----------|
| 565-D5M | 740-D5M  | 1125-D5M |
| 600-D5M | 755-D5M  | 1200-D5M |
| 615-D5M | 800-D5M  | 1270-D5M |
| 620-D5M | 835-D5M  | 1500-D5M |
| 630-D5M | 890-D5M  |          |
| 635-D5M | 900-D5M  |          |
| 665-D5M | 925-D5M  |          |
| 700-D5M | 1000-D5M |          |
| 710-D5M | 1050-D5M |          |

**8MM Pitch (DHT) – Neoprene (Metric)**

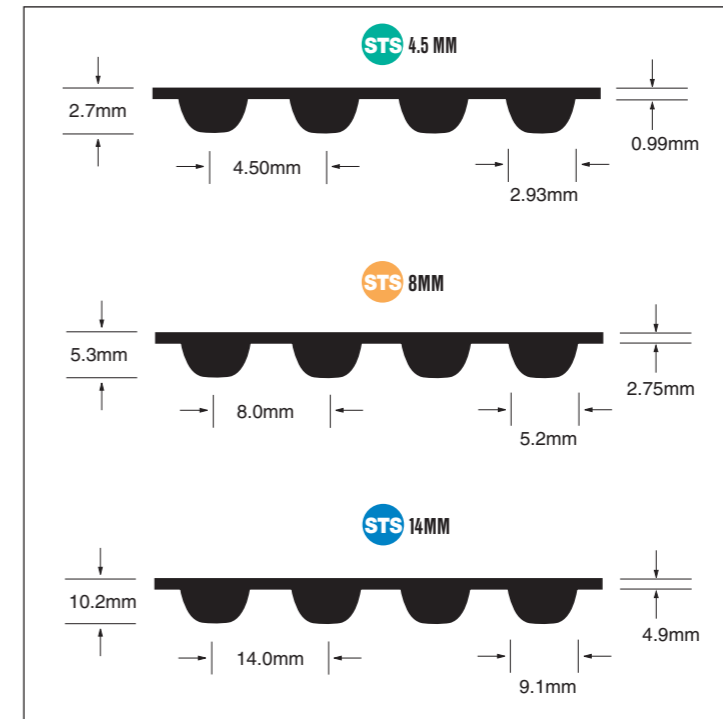
|         |          |          |
|---------|----------|----------|
| 600-D8M | 912-D8M  | 1328-D8M |
| 624-D8M | 920-D8M  | 1360-D8M |
| 640-D8M | 960-D8M  | 1424-D8M |
| 656-D8M | 1040-D8M | 1440-D8M |
| 720-D8M | 1120-D8M | 1600-D8M |
| 776-D8M | 1184-D8M | 1760-D8M |
| 784-D8M | 1200-D8M | 1800-D8M |
| 800-D8M | 1280-D8M | 2000-D8M |
| 880-D8M | 1304-D8M |          |

**8MM Pitch (HT) – Neoprene (Metric)**

|        |         |         |
|--------|---------|---------|
| 376-8M | 800-8M  | 1424-8M |
| 424-8M | 880-8M  | 1440-8M |
| 472-8M | 912-8M  | 1600-8M |
| 480-8M | 920-8M  | 1760-8M |
| 560-8M | 960-8M  | 1800-8M |
| 600-8M | 1040-8M | 2000-8M |
| 624-8M | 1120-8M | 2248-8M |
| 640-8M | 1200-8M | 2400-8M |
| 656-8M | 1280-8M | 2800-8M |
| 720-8M | 1304-8M |         |
| 776-8M | 1328-8M |         |
| 784-8M | 1360-8M |         |

**5MM Pitch (STS) – Neoprene (Metric)**

|         |         |          |
|---------|---------|----------|
| S5M-225 | S5M-560 | S5M-870  |
| S5M-255 | S5M-565 | S5M-900  |
| S5M-275 | S5M-575 | S5M-920  |
| S5M-295 | S5M-600 | S5M-940  |
| S5M-300 | S5M-625 | S5M-950  |
| S5M-320 | S5M-635 | S5M-965  |
| S5M-325 | S5M-645 | S5M-975  |
| S5M-350 | S5M-650 | S5M-1000 |
| S5M-375 | S5M-665 | S5M-1025 |
| S5M-380 | S5M-670 | S5M-1050 |
| S5M-390 | S5M-675 | S5M-1125 |
| S5M-400 | S5M-695 | S5M-1135 |
| S5M-410 | S5M-700 | S5M-1145 |
| S5M-420 | S5M-710 | S5M-1195 |
| S5M-425 | S5M-725 | S5M-1225 |
| S5M-435 | S5M-740 | S5M-1250 |
| S5M-440 | S5M-750 | S5M-1260 |
| S5M-445 | S5M-765 | S5M-1270 |
| S5M-450 | S5M-770 | S5M-1295 |
| S5M-475 | S5M-775 | S5M-1350 |
| S5M-490 | S5M-800 | S5M-1420 |
| S5M-500 | S5M-810 | S5M-1595 |
| S5M-520 | S5M-830 | S5M-1800 |
| S5M-525 | S5M-850 | S5M-2000 |
| S5M-550 | S5M-860 |          |



**4.5MM Pitch (STS) – Neoprene (Metric)**

|           |            |
|-----------|------------|
| S4.5M-162 | S4.5M-450  |
| S4.5M-180 | S4.5M-491  |
| S4.5M-198 | S4.5M-504  |
| S4.5M-225 | S4.5M-518  |
| S4.5M-239 | S4.5M-558  |
| S4.5M-252 | S4.5M-563  |
| S4.5M-279 | S4.5M-612  |
| S4.5M-284 | S4.5M-630  |
| S4.5M-315 | S4.5M-711  |
| S4.5M-324 | S4.5M-729  |
| S4.5M-351 | S4.5M-801  |
| S4.5M-383 | S4.5M-1031 |
| S4.5M-396 |            |

**8MM Pitch (STS) – Neoprene (Metric)**

|         |          |          |
|---------|----------|----------|
| S8M-352 | S8M-944  | S8M-1392 |
| S8M-384 | S8M-960  | S8M-1400 |
| S8M-408 | S8M-984  | S8M-1408 |
| S8M-424 | S8M-992  | S8M-1424 |
| S8M-440 | S8M-1000 | S8M-1440 |
| S8M-456 | S8M-1024 | S8M-1480 |
| S8M-480 | S8M-1032 | S8M-1520 |
| S8M-520 | S8M-1040 | S8M-1552 |
| S8M-560 | S8M-1056 | S8M-1600 |
| S8M-584 | S8M-1064 | S8M-1728 |
| S8M-600 | S8M-1096 | S8M-1760 |
| S8M-632 | S8M-1120 | S8M-1776 |
| S8M-640 | S8M-1136 | S8M-1800 |
| S8M-656 | S8M-1152 | S8M-1808 |
| S8M-672 | S8M-1160 | S8M-1816 |
| S8M-680 | S8M-1168 | S8M-1880 |
| S8M-688 | S8M-1176 | S8M-1912 |
| S8M-696 | S8M-1184 | S8M-1952 |
| S8M-712 | S8M-1192 | S8M-2000 |
| S8M-720 | S8M-1200 | S8M-2120 |
| S8M-728 | S8M-1208 | S8M-2160 |
| S8M-736 | S8M-1216 | S8M-2240 |
| S8M-760 | S8M-1224 | S8M-2304 |
| S8M-768 | S8M-1240 | S8M-2392 |
| S8M-784 | S8M-1248 | S8M-2400 |
| S8M-792 | S8M-1256 | S8M-2496 |
| S8M-800 | S8M-1264 | S8M-2560 |
| S8M-840 | S8M-1272 | S8M-2600 |
| S8M-848 | S8M-1280 | S8M-2800 |
| S8M-864 | S8M-1296 | S8M-2880 |
| S8M-880 | S8M-1304 | S8M-3200 |
| S8M-888 | S8M-1312 | S8M-3600 |
| S8M-896 | S8M-1344 | S8M-3720 |
| S8M-912 | S8M-1352 | S8M-3904 |
| S8M-920 | S8M-1384 | S8M-4400 |

**14MM Pitch (STS) Neoprene (Metric)**

|           |           |
|-----------|-----------|
| S14M-1008 | S14M-2380 |
| S14M-1120 | S14M-2450 |
| S14M-1190 | S14M-2506 |
| S14M-1246 | S14M-2590 |
| S14M-1400 | S14M-2660 |
| S14M-1540 | S14M-2800 |
| S14M-1610 | S14M-3150 |
| S14M-1652 | S14M-3500 |
| S14M-1778 | S14M-3556 |
| S14M-1806 | S14M-3850 |
| S14M-1890 | S14M-4004 |
| S14M-1904 | S14M-4060 |
| S14M-2002 | S14M-4326 |
| S14M-2100 | S14M-4508 |
| S14M-2240 | S14M-5012 |
| S14M-2310 |           |

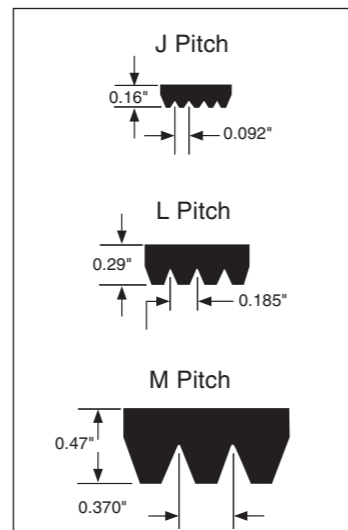
| 2MM Pitch (DSTS) – Neoprene (Metric) |           |
|--------------------------------------|-----------|
| DS2M -300                            | DS2M -474 |
| DS2M -308                            | DS2M -490 |
| DS2M -316                            | DS2M -500 |
| DS2M -328                            | DS2M -520 |
| DS2M -340                            | DS2M -540 |
| DS2M -364                            | DS2M -560 |
| DS2M -400                            | DS2M -598 |
| DS2M -438                            | DS2M -656 |
| DS2M -448                            | DS2M -940 |
| DS2M -452                            |           |

| 8MM Pitch (DSTS) – Neoprene (Metric) |            |
|--------------------------------------|------------|
| DS8M -600                            | DS8M -1056 |
| DS8M -632                            | DS8M -1064 |
| DS8M -640                            | DS8M -1120 |
| DS8M -656                            | DS8M -1136 |
| DS8M -688                            | DS8M -1160 |
| DS8M -696                            | DS8M -1168 |
| DS8M -712                            | DS8M -1176 |
| DS8M -720                            | DS8M -1184 |
| DS8M -728                            | DS8M -1200 |
| DS8M -736                            | DS8M -1216 |
| DS8M -760                            | DS8M -1240 |
| DS8M -768                            | DS8M -1256 |
| DS8M -784                            | DS8M -1264 |
| DS8M -792                            | DS8M -1280 |
| DS8M -800                            | DS8M -1304 |
| DS8M -824                            | DS8M -1312 |
| DS8M -848                            | DS8M -1400 |
| DS8M -864                            | DS8M -1408 |
| DS8M -880                            | DS8M -1440 |
| DS8M -912                            | DS8M -1480 |
| DS8M -920                            | DS8M -1600 |
| DS8M -944                            | DS8M -1760 |
| DS8M -960                            | DS8M -1776 |
| DS8M -992                            | DS8M -1800 |
| DS8M -1000                           | DS8M -1816 |

| 3MM Pitch (DSTS) – Neoprene (Metric) |           |
|--------------------------------------|-----------|
| DS3M -300                            | DS3M -516 |
| DS3M -309                            | DS3M -525 |
| DS3M -339                            | DS3M -537 |
| DS3M -363                            | DS3M -540 |
| DS3M -372                            | DS3M -564 |
| DS3M -378                            | DS3M -588 |
| DS3M -384                            | DS3M -597 |
| DS3M -387                            | DS3M -600 |
| DS3M -402                            | DS3M -633 |
| DS3M -406                            | DS3M -657 |
| DS3M -420                            | DS3M -660 |
| DS3M -423                            | DS3M -699 |
| DS3M -453                            | DS3M -789 |
| DS3M -459                            | DS3M -810 |
| DS3M -468                            | DS3M -882 |
| DS3M -480                            | DS3M -900 |
| DS3M -486                            | DS3M -918 |
| DS3M -489                            | DS3M -936 |

| 14MM Pitch (DSTS) – Neoprene (Metric) |             |
|---------------------------------------|-------------|
| DS14M -1008                           | DS14M -2380 |
| DS14M -1120                           | DS14M -2450 |
| DS14M -1190                           | DS14M -2506 |
| DS14M -1246                           | DS14M -2590 |
| DS14M -1400                           | DS14M -2660 |
| DS14M -1540                           | DS14M -2800 |
| DS14M -1610                           | DS14M -3150 |
| DS14M -1806                           | DS14M -3500 |
| DS14M -1890                           | DS14M -3556 |
| DS14M -2002                           | DS14M -3850 |
| DS14M -2100                           | DS14M -4004 |
| DS14M -2240                           | DS14M -4508 |
| DS14M -2310                           |             |

| 4.5MM Pitch (DSTS) – Neoprene (Metric) |             |
|--|-------------|
| DS4.5M -450                            | DS4.5M -612 |
| DS4.5M -491                            | DS4.5M -630 |
| DS4.5M -504                            | DS4.5M -711 |
| DS4.5M -518                            | DS4.5M -729 |
| DS4.5M -558                            | DS4.5M -801 |
| DS4.5M -563                            |             |



| POLY V J |      |
|----------|------|
| 80J      | 430J |
| 90J      | 435J |
| 95J      | 440J |
| 100J     | 445J |
| 105J     | 450J |
| 110J     | 460J |
| 120J     | 470J |
| 130J     | 480J |
| 132J     | 485J |
| 140J     | 490J |
| 150J     | 500J |
| 160J     | 505J |
| 170J     | 510J |
| 180J     | 515J |
| 190J     | 520J |
| 200J     | 530J |
| 210J     | 540J |
| 220J     | 550J |
| 230J     | 560J |
| 240J     | 580J |
| 260J     | 610J |
| 270J     | 625J |
| 280J     | 650J |
| 285J     | 655J |
| 290J     | 690J |
| 300J     | 730J |
| 310J     | 750J |
| 320J     | 770J |
| 330J     | 775J |
| 340J     | 785J |
| 360J     | 820J |
| 370J     | 870J |
| 380J     | 920J |
| 390J     | 940J |
| 400J     | 980J |
| 425J     |      |

| POLY V L |       |
|----------|-------|
| 375L     | 915L  |
| 390L     | 930L  |
| 425L     | 975L  |
| 500L     | 990L  |
| 525L     | 1065L |
| 540L     | 1080L |
| 550L     | 1120L |
| 560L     | 1140L |
| 580L     | 1150L |
| 615L     | 1180L |
| 635L     | 1215L |
| 655L     | 1230L |
| 675L     | 1295L |
| 695L     | 1310L |
| 710L     | 1375L |
| 725L     | 1455L |
| 765L     | 1595L |
| 780L     | 1650L |
| 795L     | 1700L |
| 815L     | 1760L |
| 825L     | 1820L |
| 840L     | 1980L |
| 865L     | 2120L |
| 880L     | 2400L |

| POLY V M |  |
|----------|--|
| 900M     |  |
| 940M     |  |
| 990M     |  |
| 1060M    |  |
| 1115M    |  |
| 1150M    |  |
| 1185M    |  |
| 1230M    |  |
| 1310M    |  |
| 1390M    |  |
| 1470M    |  |
| 1610M    |  |
| 1650M    |  |
| 1760M    |  |
| 1830M    |  |
| 1980M    |  |
| 2130M    |  |
| 2410M    |  |
| 2710M    |  |
| 3010M    |  |
| 3310M    |  |
| 3610M    |  |
| 3910M    |  |
| 4210M    |  |
| 4810M    |  |
| 5410M    |  |
| 6010M    |  |



Bandas Poly-V / Poly-V Belts  
Neopreno paso / Neoprene Poly-V:  
J, L y M.

México: (81) 5000 6363

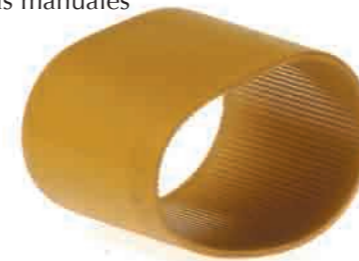
# Megarib

## Bandas de poliuretano Poly V Urethane belts Poly V

MEGARIB son fabricadas en poliuretano con cuerdas de poliéster, que a su vez combina flexibilidad de la banda plana con el poder de una banda en V.

Aplicaciones:

- ▶ Procesadoras de alimentos
- ▶ Máquinas para el corte de césped.
- ▶ Lavadoras
- ▶ Herramientas manuales eléctricas

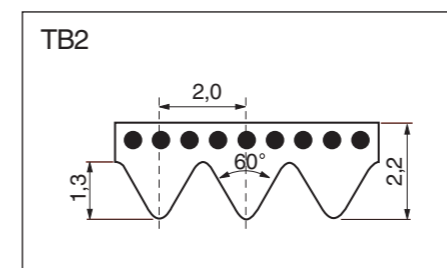
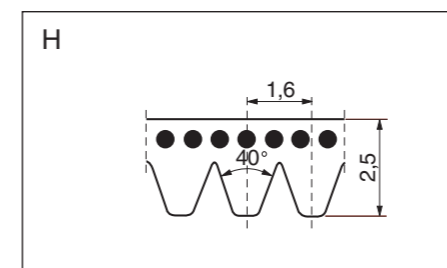
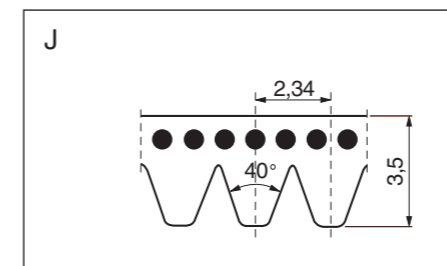


MEGARIB are manufactured in polyurethane with a semi-elastic tension member. They can be fitted on fix centre drives, reducing noise and vibrations.

The absence of a tensioning mechanism, offers additional cost savings. These belts are available in a wide variety of rib pitches and length (See below).

The main applications are:

- ▶ Food processors
- ▶ Grass cutting equipment
- ▶ Electrical household appliances
- ▶ Washing machines
- ▶ Electrical tools
- ▶ Woodworking equipment
- ▶ Domestic power tools



| J                    |          |
|----------------------|----------|
| STANDARD LENGTH (MM) | (INCHES) |
| 220                  | 87       |
| 271                  | 107      |
| 275                  | 108      |
| 278                  | 110      |
| 283                  | 111      |
| 288                  | 114      |
| 304                  | 120      |
| 330                  | 130      |
| 345                  | 135      |
| 356                  | 140      |
| 360                  | 142      |
| 381                  | 150      |
| 392                  | 154      |
| 406                  | 160      |
| 431                  | 170      |
| 444                  | 175      |
| 457                  | 180      |
| 471                  | 185      |
| 483                  | 190      |
| 508                  | 200      |
| 558                  | 220      |
| 610                  | 240      |
| 660                  | 260      |
| 681                  | 268      |
| 711                  | 280      |
| 762                  | 300      |
| 864                  | 340      |
| 914                  | 360      |
| 953                  | 376      |
| 1010                 | 398      |
| 1086                 | 428      |
| 1120                 | 440      |
| 1163                 | 458      |
| 1202                 | 474      |
| 1239                 | 488      |
| 1268                 | 500      |
| 1397                 | 590      |

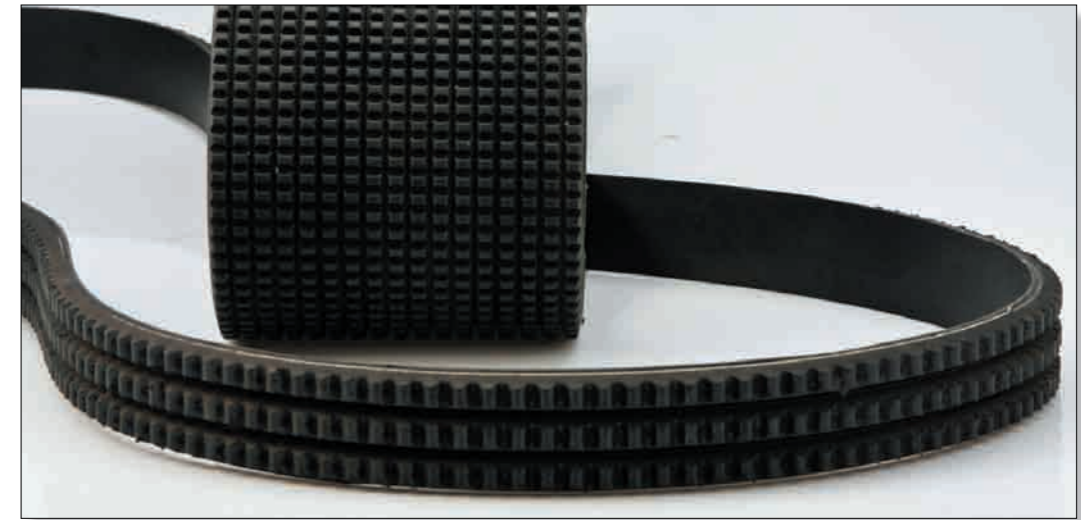
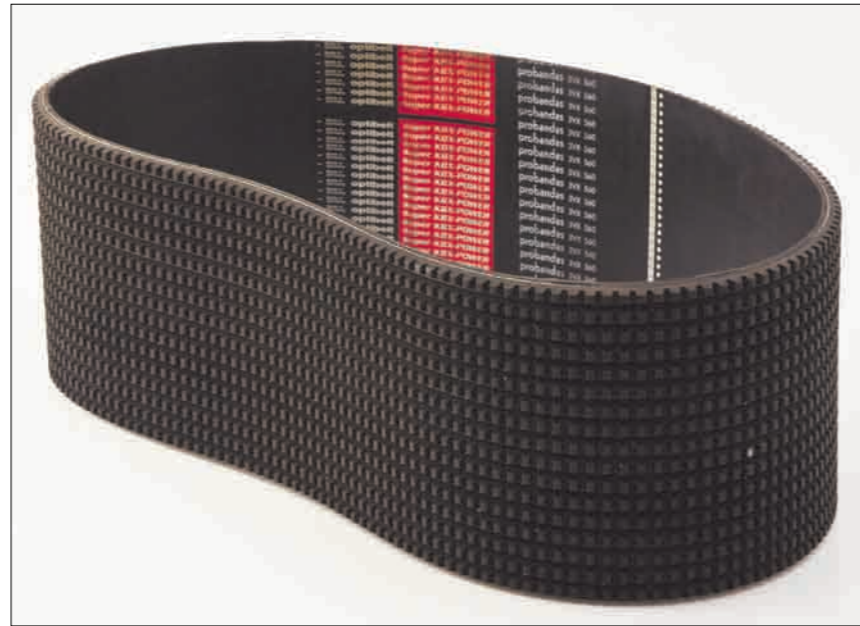
| H                    |  |
|----------------------|--|
| STANDARD LENGTH (MM) |  |
| 178                  |  |
| 217                  |  |
| 223                  |  |
| 227                  |  |
| 229                  |  |
| 248                  |  |
| 266                  |  |
| 295                  |  |
| 330                  |  |
| 340                  |  |
| 375                  |  |
| 389                  |  |
| 400                  |  |
| 485                  |  |
| 507                  |  |
| 588                  |  |
| 602                  |  |
| 609                  |  |
| 650                  |  |
| 768                  |  |
| 935                  |  |
| 1000                 |  |
| 1086                 |  |
| 1120                 |  |
| 1163                 |  |
| 1203                 |  |
| 1240                 |  |
| 1775                 |  |
| 1976                 |  |

| TB2                  |  |
|----------------------|--|
| STANDARD LENGTH (MM) |  |
| 156                  |  |
| 170                  |  |
| 200                  |  |
| 231                  |  |
| 248                  |  |
| 266                  |  |
| 295                  |  |
| 310                  |  |
| 327                  |  |
| 330                  |  |
| 345                  |  |
| 360                  |  |
| 380                  |  |
| 400                  |  |
| 430                  |  |
| 480                  |  |
| 510                  |  |
| 526                  |  |
| 535                  |  |
| 598                  |  |
| 630                  |  |
| 660                  |  |
| 675                  |  |
| 725                  |  |
| 770                  |  |
| 1186                 |  |

U.S.A.: 1 213 814 2821

Bandas Combo en V / Banded V belts

| <b>(3V)</b> |          |          |          |
|-------------|----------|----------|----------|
| 2/ 3V450    | 3/ 3V450 | 4/ 3V450 | 5/ 3V450 |
| 2/ 3V475    | 3/ 3V475 | 4/ 3V475 | 5/ 3V475 |
| 2/ 3V500    | 3/ 3V500 | 4/ 3V500 | 5/ 3V500 |
| 2/ 3V530    | 3/ 3V530 | 4/ 3V530 | 5/ 3V530 |
| 2/ 3V560    | 3/ 3V560 | 4/ 3V560 | 5/ 3V560 |
| 2/ 3V600    | 3/ 3V600 | 4/ 3V600 | 5/ 3V600 |
| 2/ 3V630    | 3/ 3V630 | 4/ 3V630 | 5/ 3V630 |
| 2/ 3V670    | 3/ 3V670 | 4/ 3V670 | 5/ 3V670 |
| 2/ 3V710    | 3/ 3V710 | 4/ 3V710 | 5/ 3V710 |
| 2/ 3V750    | 3/ 3V750 | 4/ 3V750 | 5/ 3V750 |
| 2/ 3V800    | 3/ 3V800 | 4/ 3V800 | 5/ 3V800 |
| 2/ 3V850    | 3/ 3V850 | 4/ 3V850 | 5/ 3V850 |
| 2/ 3V900    | 3/ 3V900 | 4/ 3V900 | 5/ 3V900 |
| 2/ 3V950    | 3/ 3V950 | 4/ 3V950 | 5/ 3V950 |
| 2/3V1000    | 3/3V1000 | 4/3V1000 | 5/3V1000 |
| 2/3V1060    | 3/3V1060 | 4/3V1060 | 5/3V1060 |
| 2/3V1120    | 3/3V1120 | 4/3V1120 | 5/3V1120 |
| 2/3V1180    | 3/3V1180 | 4/3V1180 | 5/3V1180 |
| 2/3V1250    | 3/3V1250 | 4/3V1250 | 5/3V1250 |
| 2/3V1320    | 3/3V1320 | 4/3V1320 | 5/3V1320 |
| 2/3V1400    | 3/3V1400 | 4/3V1400 | 5/3V1400 |



| <b>(8V)</b> |           |           |           |
|-------------|-----------|-----------|-----------|
| 2/ 8V1000   | 3/ 8V1000 | 4/ 8V1000 | 5/ 8V1000 |
| 2/ 8V1060   | 3/ 8V1060 | 4/ 8V1060 | 5/ 8V1060 |
| 2/ 8V1120   | 3/ 8V1120 | 4/ 8V1120 | 5/ 8V1120 |
| 2/ 8V1180   | 3/ 8V1180 | 4/ 8V1180 | 5/ 8V1180 |
| 2/ 8V1250   | 3/ 8V1250 | 4/ 8V1250 | 5/ 8V1250 |
| 2/ 8V1320   | 3/ 8V1320 | 4/ 8V1320 | 5/ 8V1320 |
| 2/ 8V1400   | 3/ 8V1400 | 4/ 8V1400 | 5/ 8V1400 |
| 2/ 8V1500   | 3/ 8V1500 | 4/ 8V1500 | 5/ 8V1500 |
| 2/ 8V1600   | 3/ 8V1600 | 4/ 8V1600 | 5/ 8V1600 |
| 2/ 8V1700   | 3/ 8V1700 | 4/ 8V1700 | 5/ 8V1700 |
| 2/ 8V1800   | 3/ 8V1800 | 4/ 8V1800 | 5/ 8V1800 |
| 2/ 8V1900   | 3/ 8V1900 | 4/ 8V1900 | 5/ 8V1900 |
| 2/8V2000    | 3/8V2000  | 4/ 8V2000 | 5/8V2000  |
| 2/8V2120    | 3/8V2120  | 4/8V2120  | 5/8V2120  |
| 2/8V2240    | 3/8V2240  | 4/ 8V2240 | 5/8V2240  |
| 2/8V2360    | 3/8V2360  | 4/8V2360  | 5/8V2360  |
| 2/8V2500    | 3/8V2500  | 4/ 8V2500 | 5/8V2500  |
| 2/8V2650    | 3/8V2650  | 4/8V2650  | 5/8V2650  |
| 2/8V2800    | 3/8V2800  | 4/8V2800  | 5/8V2800  |
| 2/8V3000    | 3/8V3000  | 4/8V3000  | 5/8V3000  |
| 2/8V3150    | 3/8V3150  | 4/ 8V3150 | 5/8V3150  |
| 2/8V3350    | 3/8V3350  | 4/8V3350  | 5/8V3350  |
| 2/8V3550    | 3/8V3550  | 4/8V3550  | 5/8V3550  |
| 2/8V3750    | 3/8V3750  | 4/ 8V3750 | 5/8V3750  |
| 2/8V4000    | 3/8V4000  | 4/ 8V4000 | 5/8V4000  |
| 2/8V4250    | 3/8V4250  | 4/8V4250  | 5/8V4250  |
| 2/8V4500    | 3/8V4500  | 4/ 8V4500 | 5/8V4500  |
| 2/8V4750    | 3/8V4750  | 4/ 8V4750 | 5/8V4750  |

| <b>(5V)</b> |           |           |           |
|-------------|-----------|-----------|-----------|
| 2/ 5V500    | 3/ 5V500  | 4/ 5V500  | 5/ 5V500  |
| 2/ 5V530    | 3/ 5V530  | 4/ 5V530  | 5/ 5V530  |
| 2/ 5V560    | 3/ 5V560  | 4/ 5V560  | 5/ 5V560  |
| 2/ 5V600    | 3/ 5V600  | 4/ 5V600  | 5/ 5V600  |
| 2/ 5V630    | 3/ 5V630  | 4/ 5V630  | 5/ 5V630  |
| 2/ 5V670    | 3/ 5V670  | 4/ 5V670  | 5/ 5V670  |
| 2/ 5V710    | 3/ 5V710  | 4/ 5V710  | 5/ 5V710  |
| 2/ 5V750    | 3/ 5V750  | 4/ 5V750  | 5/ 5V750  |
| 2/ 5V800    | 3/ 5V800  | 4/ 5V800  | 5/ 5V800  |
| 2/ 5V850    | 3/ 5V850  | 4/ 5V850  | 5/ 5V850  |
| 2/ 5V900    | 3/ 5V900  | 4/ 5V900  | 5/ 5V900  |
| 2/ 5V950    | 3/ 5V950  | 4/ 5V950  | 5/ 5V950  |
| 2/ 5V1000   | 3/ 5V1000 | 4/5V1000  | 5/5V1000  |
| 2/ 5V1060   | 3/ 5V1060 | 4/5V1060  | 5/5V1060  |
| 2/ 5V1120   | 3/ 5V1120 | 4/5V1120  | 5/5V1120  |
| 2/ 5V1180   | 3/5V1180  | 4/5V1180  | 5/5V1180  |
| 2/ 5V1250   | 3/ 5V1250 | 4/ 5V1250 | 5/5V1250  |
| 2/ 5V1320   | 3/ 5V1320 | 4/ 5V1320 | 5/5V1320  |
| 2/ 5V1400   | 3/ 5V1400 | 4/ 5V1400 | 5/5V1400  |
| 2/ 5V1500   | 3/ 5V1500 | 4/ 5V1500 | 5/5V1500  |
| 2/ 5V1600   | 3/ 5V1600 | 4/ 5V1600 | 5/5V1600  |
| 2/ 5V1700   | 3/ 5V1700 | 4/ 5V1700 | 5/ 5V1700 |
| 2/ 5V1800   | 3/ 5V1800 | 4/ 5V1800 | 5/5V1800  |
| 2/ 5V1900   | 3/ 5V1900 | 4/ 5V1900 | 5/5V1900  |
| 2/5V2000    | 3/5V2000  | 4/5V2000  | 5/5V2000  |
| 2/5V2120    | 3/5V2120  | 4/5V2120  | 5/ 5V2120 |
| 2/5V2240    | 3/5V2240  | 4/5V2240  | 5/5V2240  |
| 2/5V2360    | 3/5V2360  | 4/5V2360  | 5/5V2360  |
| 2/5V2500    | 3/5V2500  | 4/5V2500  | 5/5V2500  |
| 2/5V2650    | 3/5V2650  | 4/5V2650  | 5/5V2650  |
| 2/5V2800    | 3/5V2800  | 4/5V2800  | 5/5V2800  |
| 2/5V3000    | 3/5V3000  | 4/5V3000  | 5/5V3000  |
| 2/ 5V3150   | 3/5V3150  | 4/5V3150  | 5/ 5V3150 |
| 2/5V3350    | 3/5V3350  | 4/5V3350  | 5/5V3350  |
| 2/5V3550    | 3/5V3550  | 4/5V3550  | 5/5V3550  |

Combos disponibles en mayor número de costillas.  
Different width available.

| <b>(SPA)</b> |            |            |            |
|--------------|------------|------------|------------|
| 2/ SPA1250   | 3/ SPA1250 | 4/ SPA1250 | 5/ SPA1250 |
| 2/ SPA1400   | 3/ SPA1400 | 4/ SPA1400 | 5/ SPA1400 |
| 2/ SPA1500   | 3/ SPA1500 | 4/ SPA1500 | 5/ SPA1500 |
| 2/ SPA1600   | 3/ SPA1600 | 4/ SPA1600 | 5/ SPA1600 |
| 2/ SPA1700   | 3/ SPA1700 | 4/ SPA1700 | 5/ SPA1700 |
| 2/ SPA1800   | 3/ SPA1800 | 4/ SPA1800 | 5/ SPA1800 |
| 2/ SPA1900   | 3/ SPA1900 | 4/ SPA1900 | 5/ SPA1900 |
| 2/SPA2000    | 3/SPA2000  | 4/SPA2000  | 5/SPA2000  |
| 2/SPA2120    | 3/SPA2120  | 4/SPA2120  | 5/SPA2120  |
| 2/SPA2240    | 3/SPA2240  | 4/SPA2240  | 5/SPA2240  |
| 2/SPA2360    | 3/SPA2360  | 4/SPA2360  | 5/SPA2360  |
| 2/SPA2500    | 3/SPA2500  | 4/SPA2500  | 5/SPA2500  |
| 2/SPA2650    | 3/SPA2650  | 4/SPA2650  | 5/SPA2650  |
| 2/SPA2800    | 3/SPA2800  | 4/SPA2800  | 5/SPA2800  |
| 2/SPA3000    | 3/SPA3000  | 4/SPA3000  | 5/SPA3000  |
| 2/ SPA3150   | 3/SPA3150  | 4/SPA3150  | 5/SPA3150  |
| 2/SPA3350    | 3/SPA3350  | 4/SPA3350  | 5/SPA3350  |
| 2/SPA3550    | 3/SPA3550  | 4/SPA3550  | 5/SPA3550  |
| 2/SPA3750    | 3/SPA3750  | 4/SPA3750  | 5/SPA3750  |
| 2/SPA4000    | 3/SPA4000  | 4/SPA4000  | 5/SPA4000  |
| 2/SPA4250    | 3/SPA4250  | 4/SPA4250  | 5/SPA4250  |
| 2/SPA4500    | 3/SPA4500  | 4/SPA4500  | 5/SPA4500  |

| <b>(SPC)</b> |             |             |             |
|--------------|-------------|-------------|-------------|
| 2/ SPC3000   | 3/ SPC3000  | 4/ SPC3000  | 5/SPC3000   |
| 2/ SPC3150   | 3/ SPC3150  | 4/ SPC3150  | 5/ SPC3150  |
| 2/ SPC3350   | 3/ SPC3350  | 4/ SPC3350  | 5/ SPC3350  |
| 2/ SPC3550   | 3/ SPC3550  | 4/ SPC3550  | 5/ SPC3550  |
| 2/ SPC3750   | 3/ SPC3750  | 4/ SPC3750  | 5/ SPC3750  |
| 2/ SPC4000   | 3/ SPC4000  | 4/ SPC4000  | 5/ SPC4000  |
| 2/ SPC4250   | 3/ SPC4250  | 4/ SPC4250  | 5/ SPC4250  |
| 2/ SPC4500   | 3/ SPC4500  | 4/ SPC4500  | 5/ SPC4500  |
| 2/ SPC4750   | 3/ SPC4750  | 4/ SPC4750  | 5/ SPC4750  |
| 2/ SPC5000   | 3/ SPC5000  | 4/ SPC5000  | 5/ SPC5000  |
| 2/ SPC5300   | 3/ SPC5300  | 4/ SPC5300  | 5/ SPC5300  |
| 2/ SPC5600   | 3/ SPC5600  | 4/ SPC5600  | 5/ SPC5600  |
| 2/ SPC6000   | 3/ SPC6000  | 4/ SPC6000  | 5/ SPC6000  |
| 2/ SPC6300   | 3/ SPC6300  | 4/ SPC6300  | 5/ SPC6300  |
| 2/ SPC6700   | 3/ SPC6700  | 4/ SPC6700  | 5/ SPC6700  |
| 2/ SPC7100   | 3/ SPC7100  | 4/ SPC7100  | 5/ SPC7100  |
| 2/ SPC7500   | 3/ SPC7500  | 4/ SPC7500  | 5/ SPC7500  |
| 2/ SPC8000   | 3/ SPC8000  | 4/ SPC8000  | 5/ SPC8000  |
| 2/ SPC8500   | 3/ SPC8500  | 4/ SPC8500  | 5/ SPC8500  |
| 2/ SPC9000   | 3/ SPC9000  | 4/ SPC9000  | 5/ SPC9000  |
| 2/ SPC9500   | 3/ SPC9500  | 4/ SPC9500  | 5/ SPC9500  |
| 2/SPC10000   | 3/SPC10000  | 4/SPC10000  | 5/SPC10000  |
| 2/SPC10600   | 3/SPC10600  | 4/SPC10600  | 5/SPC10600  |
| 2/ SPC11200  | 3/ SPC11200 | 4/ SPC11200 | 5/ SPC11200 |
| 2/ SPC11800  | 3/ SPC11800 | 4/ SPC11800 | 5/ SPC11800 |
| 2/ SPC12500  | 3/ SPC12500 | 4/ SPC12500 | 5/ SPC12500 |

| <b>(SPB)</b> |           |            |            |
|--------------|-----------|------------|------------|
| 2/SPB2000    | 3/SPB2000 | 4/ SPB2000 | 5/ SPB2000 |
| 2/SPB2120    | 3/SPB2120 | 4/ SPB2120 | 5/ SPB2120 |
| 2/SPB2240    | 3/SPB2240 | 4/ SPB2240 | 5/ SPB2240 |
| 2/SPB2360    | 3/SPB2360 | 4/ SPB2360 | 5/ SPB2360 |
| 2/SPB2500    | 3/SPB2500 | 4/ SPB2500 | 5/ SPB2500 |
| 2/SPB2650    | 3/SPB2650 | 4/ SPB2650 | 5/ SPB2650 |
| 2/SPB2800    | 3/SPB2800 | 4/ SPB2800 | 5/ SPB2800 |
| 2/SPB3000    | 3/SPB3000 | 4/ SPB3000 | 5/ SPB3000 |
| 2/SPB3150    | 3/SPB3150 | 4/SPB3150  | 5/SPB3150  |
| 2/SPB3350    | 3/SPB3350 | 4/ SPB3350 | 5/ SPB3350 |
| 2/SPB3550    | 3/SPB3550 | 4/ SPB3550 | 5/ SPB3550 |
| 2/SPB4000    | 3/SPB4000 | 4/ SPB4000 | 5/ SPB4000 |
| 2/SPB4250    | 3/SPB4250 | 4/ SPB4250 | 5/ SPB4250 |
| 2/SPB4500    | 3/SPB4500 | 4/ SPB4500 | 5/ SPB4500 |
| 2/ SPB4750   | 3/SPB4750 | 4/ SPB4750 | 5/ SPB4750 |
| 2/SPB5000    | 3/SPB5000 | 4/ SPB5000 | 5/ SPB5000 |
| 2/SPB5300    | 3/SPB5300 | 4/ SPB5300 | 5/ SPB5300 |
| 2/SPB5600    | 3/SPB5600 | 4/ SPB5600 | 5/ SPB5600 |
| 2/SPB6000    | 3/SPB6000 | 4/ SPB6000 | 5/ SPB6000 |
| 2/SPB6300    | 3/SPB6300 | 4/ SPB6300 | 5/ SPB6300 |
| 2/SPB6700    | 3/SPB6700 | 4/ SPB6700 | 5/ SPB6700 |
| 2/SPB7100    | 3/SPB7100 | 4/ SPB7100 | 5/ SPB7100 |
| 2/SPB7500    | 3/SPB7500 | 4/ SPB7500 | 5/ SPB7500 |
| 2/SPB8000    | 3/SPB8000 | 4/ SPB8000 | 5/ SPB8000 |

| <b>(SPZ)</b> |            |            |            |
|--------------|------------|------------|------------|
| 2/ SPZ1250   | 3/ SPZ1250 | 4/ SPZ1250 | 5/ SPZ1250 |
| 2/ SPZ1400   | 3/ SPZ1400 | 4/ SPZ1400 | 5/ SPZ1400 |
| 2/ SPZ1500   | 3/ SPZ1500 | 4/ SPZ1500 | 5/ SPZ1500 |
| 2/ SPZ1600   | 3/ SPZ1600 | 4/ SPZ1600 | 5/ SPZ1600 |
| 2/ SPZ1700   | 3/ SPZ1700 | 4/ SPZ1700 | 5/ SPZ1700 |
| 2/ SPZ1800   | 3/ SPZ1800 | 4/ SPZ1800 | 5/ SPZ1800 |
| 2/ SPZ1900   | 3/ SPZ1900 | 4/ SPZ1900 | 5/ SPZ1900 |
| 2/SPZ2000    | 3/SPZ2000  | 4/SPZ2000  | 5/SPZ2000  |
| 2/SPZ2120    | 3/ SPZ2120 | 4/SPZ2120  | 5/ SPZ2120 |
| 2/SPZ2240    | 3/SPZ2240  | 4/SPZ2240  | 5/ SPZ2240 |
| 2/SPZ2360    | 3/SPZ2360  | 4/SPZ2360  | 5/ SPZ2360 |
| 2/SPZ2500    | 3/SPZ2500  | 4/SPZ2500  | 5/ SPZ2500 |
| 2/SPZ2650    | 3/SPZ2650  | 4/SPZ2650  | 5/ SPZ2650 |
| 2/SPZ2800    | 3/SPZ2800  | 4/SPZ2800  | 5/ SPZ2800 |
| 2/SPZ3000    | 3/SPZ3000  | 4/SPZ3000  | 5/ SPZ3000 |
| 2/SPZ3150    | 3/SPZ3150  | 4/SPZ3150  | 5/ SPZ3150 |
| 2/SPZ3350    | 3/SPZ3350  | 4/SPZ3350  | 5/ SPZ3350 |
| 2/SPZ3550    | 3/SPZ3550  | 4/SPZ3550  | 5/ SPZ3550 |

Combos disponibles en mayor número de costillas.  
Different width available.

| (B)    |        |        |        |
|--------|--------|--------|--------|
| 2/ B48 | 3/ B48 | 4/ B48 | 5/ B48 |
| 2/ B50 | 3/ B50 | 4/ B50 | 5/ B50 |
| 2/ B51 | 3/ B51 | 4/ B51 | 5/ B51 |
| 2/ B52 | 3/ B52 | 4/ B52 | 5/ B52 |
| 2/ B53 | 3/ B53 | 4/ B53 | 5/ B53 |
| 2/ B54 | 3/ B54 | 4/ B54 | 5/ B54 |
| 2/ B55 | 3/ B55 | 4/ B55 | 5/ B55 |
| 2/ B56 | 3/ B56 | 4/ B56 | 5/ B56 |
| 2/ B57 | 3/ B57 | 4/ B57 | 5/ B57 |
| 2/ B58 | 3/ B58 | 4/ B58 | 5/ B58 |
| 2/ B59 | 3/ B59 | 4/ B59 | 5/ B59 |
| 2/ B60 | 3/ B60 | 4/ B60 | 5/ B60 |
| 2/ B61 | 3/ B61 | 4/ B61 | 5/ B61 |
| 2/ B62 | 3/ B62 | 4/ B62 | 5/ B62 |
| 2/ B63 | 3/ B63 | 4/ B63 | 5/ B63 |
| 2/ B64 | 3/ B64 | 4/ B64 | 5/ B64 |
| 2/ B65 | 3/ B65 | 4/ B65 | 5/ B65 |
| 2/ B66 | 3/ B66 | 4/ B66 | 5/ B66 |
| 2/ B67 | 3/ B67 | 4/ B67 | 5/ B67 |
| 2/ B68 | 3/ B68 | 4/ B68 | 5/ B68 |
| 2/ B70 | 3/ B70 | 4/ B70 | 5/ B70 |
| 2/ B71 | 3/ B71 | 4/ B71 | 5/ B71 |
| 2/ B72 | 3/ B72 | 4/ B72 | 5/ B72 |
| 2/ B73 | 3/ B73 | 4/ B73 | 5/ B73 |
| 2/ B74 | 3/ B74 | 4/ B74 | 5/ B74 |
| 2/ B75 | 3/ B75 | 4/ B75 | 5/ B75 |
| 2/ B77 | 3/ B77 | 4/ B77 | 5/ B77 |
| 2/ B78 | 3/ B78 | 4/ B78 | 5/ B78 |
| 2/ B79 | 3/ B79 | 4/ B79 | 5/ B79 |
| 2/ B80 | 3/ B80 | 4/ B80 | 5/ B80 |
| 2/ B81 | 3/ B81 | 4/ B81 | 5/ B81 |
| 2/ B82 | 3/ B82 | 4/ B82 | 5/ B82 |
| 2/ B83 | 3/ B83 | 4/ B83 | 5/ B83 |
| 2/ B85 | 3/ B85 | 4/ B85 | 5/ B85 |
| 2/ B86 | 3/ B86 | 4/ B86 | 5/ B86 |
| 2/ B87 | 3/ B87 | 4/ B87 | 5/ B87 |
| 2/ B88 | 3/ B88 | 4/ B88 | 5/ B88 |
| 2/ B90 | 3/ B90 | 4/ B90 | 5/ B90 |
| 2/ B93 | 3/ B93 | 4/ B93 | 5/ B93 |
| 2/ B95 | 3/ B95 | 4/ B95 | 5/ B95 |
| 2/ B96 | 3/ B96 | 4/ B96 | 5/ B96 |
| 2/ B97 | 3/ B97 | 4/ B97 | 5/ B97 |
| 2/ B99 | 3/ B99 | 4/ B99 | 5/ B99 |
| 2/B100 | 3/B100 | 4/B100 | 5/B100 |
| 2/B103 | 3/B103 | 4/B103 | 5/B103 |
| 2/B105 | 3/B105 | 4/B105 | 5/B105 |
| 2/B108 | 3/B108 | 4/B108 | 5/B108 |
| 2/B112 | 3/B112 | 4/B112 | 5/B112 |
| 2/B116 | 3/B116 | 4/B116 | 5/B116 |
| 2/B120 | 3/B120 | 4/B120 | 5/B120 |
| 2/B124 | 3/B124 | 4/B124 | 5/B124 |
| 2/B128 | 3/B128 | 4/B128 | 5/B128 |
| 2/B133 | 3/B133 | 4/B133 | 5/B133 |
| 2/B136 | 3/B136 | 4/B136 | 5/B136 |
| 2/B140 | 3/B140 | 4/B140 | 5/B140 |
| 2/B144 | 3/B144 | 4/B144 | 5/B144 |
| 2/B148 | 3/B148 | 4/B148 | 5/B148 |
| 2/B150 | 3/B150 | 4/B150 | 5/B150 |
| 2/B158 | 3/B158 | 4/B158 | 5/B158 |
| 2/B162 | 3/B162 | 4/B162 | 5/B162 |
| 2/B173 | 3/B173 | 4/B173 | 5/B173 |
| 2/B180 | 3/B180 | 4/B180 | 5/B180 |
| 2/B195 | 3/B195 | 4/B195 | 5/B195 |
| 2/B210 | 3/B210 | 4/B210 | 5/B210 |
| 2/B225 | 3/B225 | 4/B225 | 5/B225 |
| 2/B240 | 3/B240 | 4/B240 | 5/B240 |
| 2/B255 | 3/B255 | 4/B255 | 5/B255 |
| 2/B270 | 3/B270 | 4/B270 | 5/B270 |
| 2/B300 | 3/B300 | 4/B300 | 5/B300 |
| 2/B315 | 3/B315 | 4/B315 | 5/B315 |

| (C)     |         |         |         |
|---------|---------|---------|---------|
| 2/ C81  | 3/ C81  | 4/ C81  | 5/ C81  |
| 2/ C85  | 3/ C85  | 4/ C85  | 5/ C85  |
| 2/ C90  | 3/ C90  | 4/ C90  | 5/ C90  |
| 2/ C96  | 3/ C96  | 4/ C96  | 5/ C96  |
| 2/ C99  | 3/ C99  | 4/ C99  | 5/ C99  |
| 2/ C100 | 3/ C100 | 4/ C100 | 5/ C100 |
| 2/ C105 | 3/ C105 | 4/ C105 | 5/ C105 |
| 2/ C108 | 3/ C108 | 4/ C108 | 5/ C108 |
| 2/ C109 | 3/ C109 | 4/ C109 | 5/ C109 |
| 2/ C112 | 3/ C112 | 4/ C112 | 5/ C112 |
| 2/ C115 | 3/ C115 | 4/ C115 | 5/ C115 |
| 2/ C120 | 3/ C120 | 4/ C120 | 5/ C120 |
| 2/ C124 | 3/ C124 | 4/ C124 | 5/ C124 |
| 2/ C128 | 3/ C128 | 4/ C128 | 5/ C128 |
| 2/ C136 | 3/ C136 | 4/ C136 | 5/ C136 |
| 2/ C144 | 3/ C144 | 4/ C144 | 5/ C144 |
| 2/ C158 | 3/ C158 | 4/ C158 | 5/ C158 |
| 2/ C162 | 3/ C162 | 4/ C162 | 5/ C162 |
| 2/ C173 | 3/ C173 | 4/ C173 | 5/ C173 |
| 2/ C180 | 3/ C180 | 4/ C180 | 5/ C180 |
| 2/ C195 | 3/ C195 | 4/ C195 | 5/ C195 |
| 2/ C210 | 3/ C210 | 4/ C210 | 5/ C210 |
| 2/ C225 | 3/ C225 | 4/ C225 | 5/ C225 |
| 2/ C240 | 3/ C240 | 4/ C240 | 5/ C240 |
| 2/ C255 | 3/ C255 | 4/ C255 | 5/ C255 |
| 2/ C270 | 3/ C270 | 4/ C270 | 5/ C270 |
| 2/ C285 | 3/ C285 | 4/ C285 | 5/ C285 |
| 2/ C300 | 3/ C300 | 4/ C300 | 5/ C300 |
| 2/ C315 | 3/ C315 | 4/ C315 | 5/ C315 |
| 2/ C330 | 3/ C330 | 4/ C330 | 5/ C330 |
| 2/ C345 | 3/ C345 | 4/ C345 | 5/ C345 |
| 2/ C360 | 3/ C360 | 4/ C360 | 5/ C360 |
| 2/ C390 | 3/ C390 | 4/ C390 | 5/ C390 |
| 2/ C420 | 3/ C420 | 4/ C420 | 5/ C420 |

| (D)     |         |         |         |
|---------|---------|---------|---------|
| 2/ D105 | 3/ D105 | 4/ D105 | 5/ D105 |
| 2/ D120 | 3/ D120 | 4/ D120 | 5/ D120 |
| 2/ D128 | 3/ D128 | 4/ D128 | 5/ D128 |
| 2/ D140 | 3/ D140 | 4/ D140 | 5/ D140 |
| 2/ D144 | 3/ D144 | 4/ D144 | 5/ D144 |
| 2/ D158 | 3/ D158 | 4/ D158 | 5/ D158 |
| 2/ D162 | 3/ D162 | 4/ D162 | 5/ D162 |
| 2/ D173 | 3/ D173 | 4/ D173 | 5/ D173 |
| 2/ D180 | 3/ D180 | 4/ D180 | 5/ D180 |
| 2/ D195 | 3/ D195 | 4/ D195 | 5/ D195 |
| 2/ D210 | 3/ D210 | 4/ D210 | 5/ D210 |
| 2/ D225 | 3/ D225 | 4/ D225 | 5/ D225 |
| 2/ D240 | 3/ D240 | 4/ D240 | 5/ D240 |
| 2/ D255 | 3/ D255 | 4/ D255 | 5/ D255 |
| 2/ D270 | 3/ D270 | 4/ D270 | 5/ D270 |
| 2/ D285 | 3/ D285 | 4/ D285 | 5/ D285 |
| 2/ D300 | 3/ D300 | 4/ D300 | 5/ D300 |
| 2/ D315 | 3/ D315 | 4/ D315 | 5/ D315 |
| 2/ D330 | 3/ D330 | 4/ D330 | 5/ D330 |
| 2/ D345 | 3/ D345 | 4/ D345 | 5/ D345 |
| 2/ D360 | 3/ D360 | 4/ D360 | 5/ D360 |
| 2/ D390 | 3/ D390 | 4/ D390 | 5/ D390 |
| 2/ D420 | 3/ D420 | 4/ D420 | 5/ D420 |
| 2/ D540 | 3/ D540 | 4/ D540 | 5/ D540 |
| 2/ D600 | 3/ D600 | 4/ D600 | 5/ D600 |
| 2/ D660 | 3/ D660 | 4/ D660 | 5/ D660 |

Combos disponibles  
en mayor número de costillas.  
Different width available.

México: (81) 5000 6363

| (BX)    |         |         |         |
|---------|---------|---------|---------|
| 2/ BX55 | 3/ BX55 | 4/ BX55 | 5/ BX55 |
| 2/ BX58 | 3/ BX58 | 4/ BX58 | 5/ BX58 |
| 2/ BX59 | 3/ BX59 | 4/ BX59 | 5/ BX59 |
| 2/ BX60 | 3/ BX60 | 4/ BX60 | 5/ BX60 |
| 2/ BX61 | 3/ BX61 | 4/ BX61 | 5/ BX61 |
| 2/ BX62 | 3/ BX62 | 4/ BX62 | 5/ BX62 |
| 2/ BX65 | 3/ BX65 | 4/ BX65 | 5/ BX65 |
| 2/ BX66 | 3/ BX66 | 4/ BX66 | 5/ BX66 |
| 2/ BX68 | 3/ BX68 | 4/ BX68 | 5/ BX68 |
| 2/ BX70 | 3/ BX70 | 4/ BX70 | 5/ BX70 |
| 2/ BX75 | 3/ BX75 | 4/ BX75 | 5/ BX75 |
| 2/ BX77 | 3/ BX77 | 4/ BX77 | 5/ BX77 |
| 2/ BX78 | 3/ BX78 | 4/ BX78 | 5/ BX78 |
| 2/ BX79 | 3/ BX79 | 4/ BX79 | 5/ BX79 |
| 2/ BX80 | 3/ BX80 | 4/ BX80 | 5/ BX80 |
| 2/ BX85 | 3/ BX85 | 4/ BX85 | 5/ BX85 |
| 2/ BX90 | 3/ BX90 | 4/ BX90 | 5/ BX90 |
| 2/ BX93 | 3/ BX93 | 4/ BX93 | 5/ BX93 |
| 2/ BX95 | 3/ BX95 | 4/ BX95 | 5/ BX95 |
| 2/ BX97 | 3/ BX97 | 4/ BX97 | 5/ BX97 |
| 2/BX100 | 3/BX100 | 4/BX100 | 5/BX100 |
| 2/BX103 | 3/BX103 | 4/BX103 | 5/BX103 |
| 2/BX105 | 3/BX105 | 4/BX105 | 5/BX105 |
| 2/BX108 | 3/BX108 | 4/BX108 | 5/BX108 |
| 2/BX112 | 3/BX112 | 4/BX112 | 5/BX112 |

| (3VX)     |           |           |           |
|-----------|-----------|-----------|-----------|
| 2/ 3VX425 | 3/ 3VX425 | 4/ 3VX425 | 5/ 3VX425 |
| 2/ 3VX500 | 3/ 3VX500 | 4/ 3VX500 | 5/ 3VX500 |
| 2/ 3VX530 | 3/ 3VX530 | 4/ 3VX530 | 5/ 3VX530 |
| 2/ 3VX560 | 3/ 3VX560 | 4/ 3VX560 | 5/ 3VX560 |
| 2/ 3VX600 | 3/ 3VX600 | 4/ 3VX600 | 5/ 3VX600 |
| 2/ 3VX630 | 3/ 3VX630 | 4/ 3VX630 | 5/ 3VX630 |
| 2/ 3VX670 | 3/ 3VX670 | 4/ 3VX670 | 5/ 3VX670 |
| 2/ 3VX710 | 3/ 3VX710 | 4/ 3VX710 | 5/ 3VX710 |
| 2/ 3VX750 | 3/ 3VX750 | 4/ 3VX750 | 5/ 3VX750 |
| 2/ 3VX800 | 3/ 3VX800 | 4/ 3VX800 | 5/ 3VX800 |
| 2/ 3VX850 | 3/ 3VX850 | 4/ 3VX850 | 5/ 3VX850 |
| 2/ 3VX900 | 3/ 3VX900 | 4/ 3VX900 | 5/ 3VX900 |
| 2/ 3VX950 | 3/ 3VX950 | 4/ 3VX950 | 5/ 3VX950 |
| 2/3VX1000 | 3/3VX1000 | 4/3VX1000 | 5/3VX1000 |
| 2/3VX1060 | 3/3VX1060 | 4/3VX1060 | 5/3VX1060 |
| 2/3VX1120 | 3/3VX1120 | 4/3VX1120 | 5/3VX1120 |
| 2/3VX1180 | 3/3VX1180 | 4/3VX1180 | 5/3VX1180 |
| 2/3VX1250 | 3/3VX1250 | 4/3VX1250 | 5/3VX1250 |
| 2/3VX1320 | 3/3VX1320 | 4/3VX1320 | 5/3VX1320 |
| 2/3VX1400 | 3/3VX1400 | 4/3VX1400 | 5/3VX1400 |

| (5VX)     |           |           |           |
|-----------|-----------|-----------|-----------|
| 2/ 5VX425 | 3/ 5VX425 | 4/ 5VX425 | 5/ 5VX425 |
| 2/ 5VX500 | 3/ 5VX500 | 4/ 5VX500 | 5/ 5VX500 |
| 2/ 5VX530 | 3/ 5VX530 | 4/ 5VX530 | 5/ 5VX530 |
| 2/ 5VX560 | 3/ 5VX560 | 4/ 5VX560 | 5/ 5VX560 |
| 2/ 5VX600 | 3/ 5VX600 | 4/ 5VX600 | 5/ 5VX600 |
| 2/ 5VX630 | 3/ 5VX630 | 4/ 5VX630 | 5/ 5VX630 |
| 2/ 5VX670 | 3/ 5VX670 | 4/ 5VX670 | 5/ 5VX670 |
| 2/ 5VX710 | 3/ 5VX710 | 4/ 5VX710 | 5/ 5VX710 |
| 2/ 5VX750 | 3/ 5VX750 | 4/ 5VX750 | 5/ 5VX750 |
| 2/ 5VX800 | 3/ 5VX800 | 4/ 5VX800 | 5/ 5VX800 |
| 2/ 5VX850 | 3/ 5VX850 | 4/ 5VX850 | 5/ 5VX850 |
| 2/ 5VX900 | 3/ 5VX900 | 4/ 5VX900 | 5/ 5VX900 |
| 2/ 5VX950 | 3/ 5VX950 | 4/ 5VX950 | 5/ 5VX950 |
| 2/5VX1000 | 3/5VX1000 | 4/5VX1000 | 5/5VX1000 |
| 2/5VX1060 | 3/5VX1060 | 4/5VX1060 | 5/5VX1060 |
| 2/5VX1120 | 3/5VX1120 | 4/5VX1120 | 5/5VX1120 |
| 2/5VX1180 | 3/5VX1180 | 4/5VX1180 | 5/5VX1180 |
| 2/5VX1250 | 3/5VX1250 | 4/5VX1250 | 5/5VX1250 |
| 2/5VX1320 | 3/5VX1320 | 4/5VX1320 | 5/5VX1320 |
| 2/5VX1400 | 3/5VX1400 | 4/5VX1400 | 5/5VX1400 |



### Bandas transportadoras ligeras / Lightweight conveyor belts

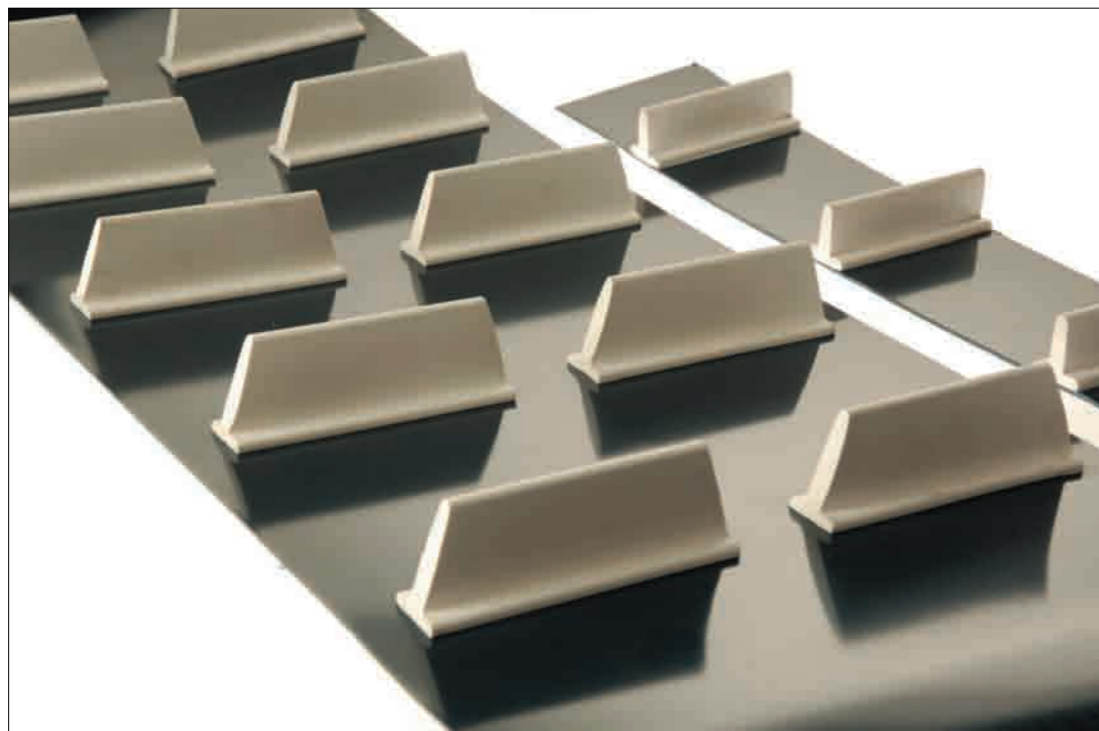
Tenemos en stock gran variedad de bandas transportadoras ligeras en rollos para cumplir con las necesidades de nuestros clientes, contamos con bandas para industria alimenticia, estampado, cartoneras, transporte en general, antiestáticas, pañaleras, papeleras, etc. PROBANDAS cuenta con su Equipo de instalación en campo, para vulcanizar hasta 1500mm de ancho en planta.

We have a large inventory on full slabs that we can slit, vulcanize, do custom made applications. PROBANDAS has a specialized team for vulcanization in field, we can splice up to 1500mm width of belt (59").

### Banda plana con guías *V Guided conveyor belts*

Contamos con guías K6, K8, K10, K13, K17 en stock para cumplir las necesidades de nuestros clientes, instalándolas en bandas transportadoras.

*We stock K6, K8, K10, K13, K17 V Guides for welding and vulcanize into conveyor belting.*



### Bandas planas con empujadores / *Cleated conveyor belts*

En bandas transportadoras podemos agregar empujadores tipo T, de diversas alturas, y nos adaptamos a necesidades críticas.

*We can Weld "T" style cleats into conveyor belts, we stock a wide variety of heights of cleats so our deliveries are FAST.*

### Bandas planas con perforaciones según sus necesidades *Flat conveyor belts with custom made perforations*



### Bandas planas con recubrimiento y guías / *Covered flat belts*

Nuestra capacidad de recubrir cualquier banda, nos da la oportunidad de brindarle la mejor calidad de bandas planas con diversos recubrimientos y guías, para aplicaciones especiales.



*We can do flat belts with a diverse types of rubber or foam covers, and also V guide the same belt, for special applications.*



## Servicios

### Vulcanizado / Splice

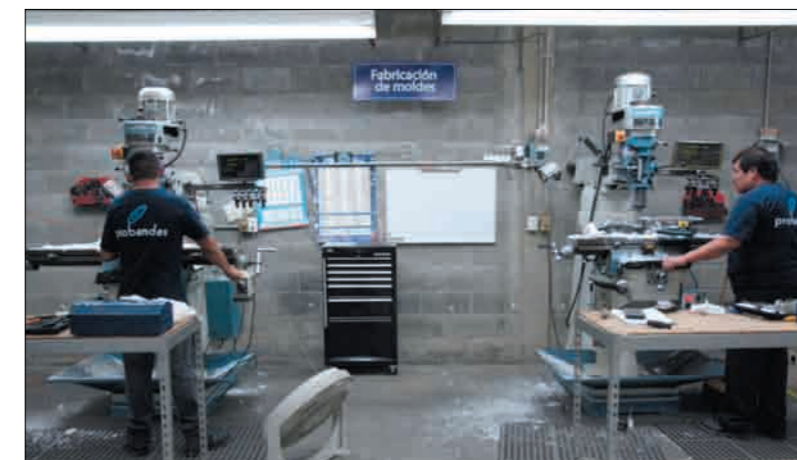
En nuestras instalaciones contamos con prensas de las mejores marcas para hacer vulcanizados hasta 72" de ancho.

*We can vulcanize in our facility up to 72" wide conveyor belt.*



Contamos con descapadora y suajadora de dedos de banda transportadora ligera para hacer vulcanizados de doble dedo para un mejor rendimiento.

*We have a ply-separator machine for lightweight conveyor belt to do finger over finger splice to have a better splice life.*

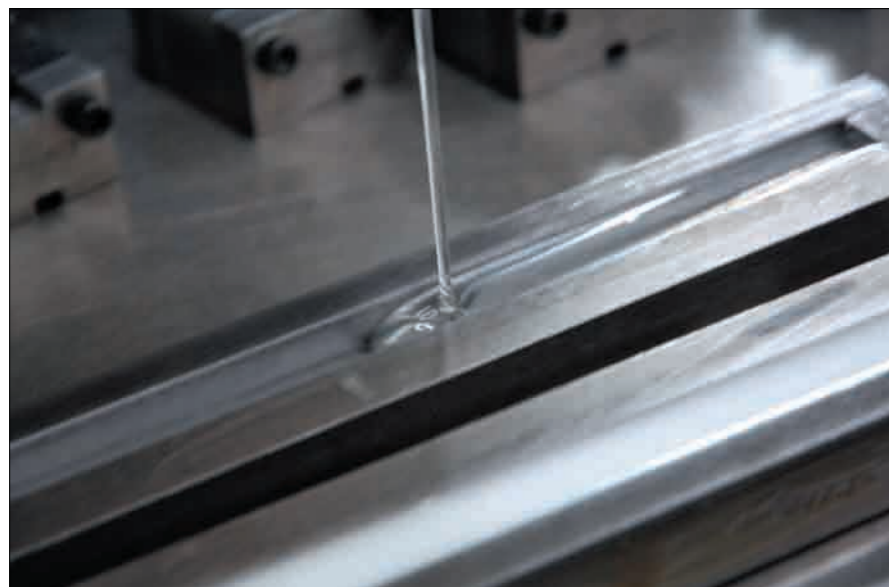


### Más capacidades de producción

*More capabilities that we offer*

En nuestra planta tenemos nuestro propio taller de maquinados para la fabricación de moldes y herramientas especiales.

*In our facility we have our own machine shop for the mold and special tooling construction.*



Vaciado de poliuretano con durezas desde 40 Shore A hasta 100 Shore A.

*Urethane casting for a diverse shapes of special pieces, from 40-100 Shore A.*

Empujadores de Poliuretano para banda transportadora, pueden fabricarse con Insertos metálicos, listos para ser atornillados.

*Custom made urethane cleats for conveyor belts, can be made with metal inserts ready to be bolted.*



Corte de bandas dentadas de neopreno y poliuretano, con nuestra cortadora semi-automática.

*Semi-automatic slitter for Neoprene and urethane timing belt.*

### Bandas para Industria textil Textile industry belts

Fabricamos bandas dentadas para máquinas textiles circulares, 10-TT5 con cuerdas de acero ó kevlar.

*We can manufacture urethane timing belts for circular knitting machines, 10-TT5 with steel or kevlar cords.*



### Bandas para Industria de corte de cables Wire industry belts

Tenemos bandas alimentadoras de cable para cortadoras Megomat, Komax, Schleuniger, Eubanks, Artos.

*We stock belts for wire cutter machines, Megomat, Komax, Schleuniger, Eubanks, Artos.*



### Bandas para Industria de conversión Belts for Paper conversion industry

Fabricamos bandas dentadas para máquinas cortadoras de rollos.

*We can manufacture urethane timing belt for log-saw paper cutting machines.*



**Probandas, S. de R.L. de C.V.**

Av. 20 de Noviembre 100-4, Col. Trabajadores, Santa Catarina, N.L. C.P. 66100, México

Tel. (52) 81-5000-6363, Fax (52) 81-8336-0203, U.S.A. 1-213-814-2821

**SUCURSAL CD. DE MEXICO:** Cholultecas 10, Col. La Raza, Del. Azcapotzalco, México D.F.

C.P. 02990 Tel / Fax. (52) 55-5597-1840

[www.probandas.com](http://www.probandas.com)